

CORROSION RESISTANT FITTINGS

Developed for the transfer of corrosive
chemicals and abrasive materials.



Corrosion Resistant Fittings For Loading/Unloading Hose

An array of hose fittings to fit each application



Blind Flange



Steel Reinforced UHMWPE Blind Flange



F Adapter



Reinforced F Adapter



Reinforced Barb x Male Adapter



KC Series Barb x Male NPT



KCSKT Series Barb x Socket



KEP Series Barb x Male Adapter



2pc. BPY Series Barb x UHMWPE 150# Flange



2pc. BSS Series Barb x 304SS 150# Flange



2pc. Reducing Barb x 304SS 150# Flange



2pc. KPY Series Male Adapter Flange



2pc. KPY 304SS Reinforced Male Adapter Flange



2pc. KPY UHMWPE Reinforced Male Adapter Flange



Sight Glass Flange

We can manufacture any of the listed products in most materials requested, including:

- UHMWPE
- Carbon Steel
- Polypropylene
- Stainless Steel
- PVDF (Kynar)
- PVC and CPVC



Barb x UHMWPE Female Coupler

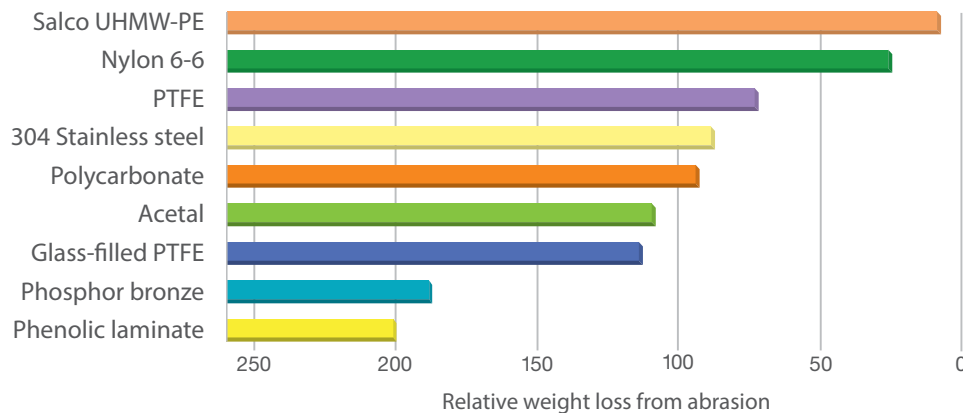


UHMWPE Cap

Mechanical Properties	Metric	English	Comments
Hardness, Shore D	66	66	ASTM D2240
Tensile Strength, Ultimate	40 MPa	5800 psi	ASTM D638
Elongation at Break	300%	300%	ASTM D638
Tensile Modulus	0.689 GPa	100 ksi	ASTM D638
Flexural Modulus	0.758 GPa	110 ksi	ASTM D790
Flexural Yield Strength	24.1 MPa	3500 psi	ASTM D790
Compressive Strength	20.7 MPa	3000 psi	10% Def. 73F; ASTM D695
Compressive Modulus	0.552 GPa	80 ksi	ASTM D965
Shear Strength	33.1 MPa	4800 psi	ASTM D732
Coefficient of Friction	0.12	0.12	Dry vs. Steel; QTM55007
Limiting Pressure Velocity	0.0701 MPa-m/sec	2000 psi-ft/min	4 : 1 safety factor; QTM 55007
Izod Impact, Notched	NB	NB	ASTM D256 Type A

Wear Properties

Sand slurry abrasion test results



In the test, each material was weighed before and after being rotated at 1,750rpm in a sand-and-water mixture for seven hours (known as a sand slurry abrasion test). The numbers in the graph represent relative weight loss - lower numbers mean higher resistance to abrasion.

Compatibility Chart

Salco Polyethylene

	70° F	122° F	170° F
Caustic Soda	1	1	1
Ferric Nitrate	1	*	*
Ferric Sulfate	1	*	*
Ferrous Chloride	1	*	*
Ferrous Sulfate	1	*	*
Hydrochloric Acid (>20%)	1	1	Boiling NR
Hydrochloric Acid (50%)	1	1	Boiling NR
Hydrochloric Acid (>40%)	1	2	*
Hydrofluosilicic Acid	1	*	*
Hydrofluorisilicic Acid	1	*	*
Hypochlorous Acid	*	*	*
Sulfuric Acid (10%)	1	1	*
Sulfuric Acid (30%)	1	1	*
Sulfuric Acid (60%)	1	1	*
Sulfuric Acid (80%)	1	3	*
Sulfuric Acid (100%)	1	NR	*

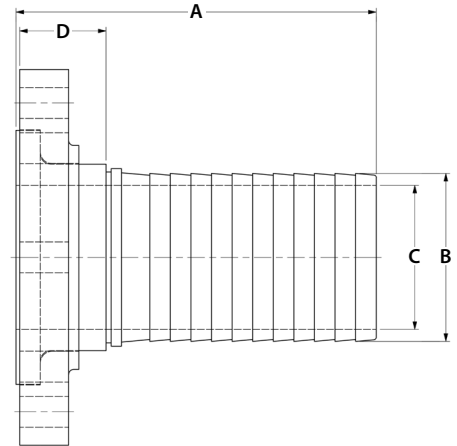
- <15% loss in property values. Little or no chemical attack.
 - 15-30% loss in property values. Minor chemical attack.
 - 30-50% loss in property values. Moderate chemical attack.
- NR** Not recommended. > 50% loss in property values.
- * No data available.



BPY/BSS Series Flanged Hose Barb

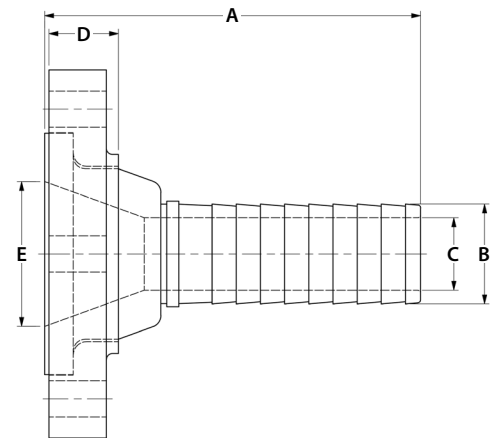
Size	A	B	C	D
1"	3 29/32"	1 1/16"	9/16"	1 1/16"
1 1/4"	4 27/32"	1 5/16"	7/8"	1 1/8"
1 1/2"	4 7/8"	1 9/16"	1 1/8"	1 3/8"
2"	7 7/32"	2 3/32"	1 1/2"	1 3/8"
2 1/2"	8"	2 19/32"	2"	1 7/16"
3"	8 13/16"	3 3/32"	2 1/2"	1 7/16"
4"	8 3/4"	4 3/32"	3 1/2"	1 7/16"
6"	11 1/2"	6 1/8"	4 11/16"	2 1/2"

* 6" only available in BSS Series



BPY/BSS Series Reducing Flanged Hose Barb

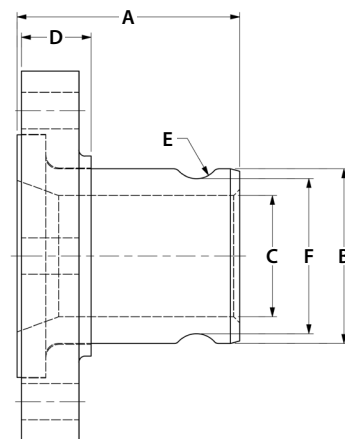
Size	A	B	C	D	E
2 1/2" x 2"	8 13/16"	2 3/32"	1 1/2"	1 7/16"	2 1/2"
3" x 1 1/2"	5 1/4"	1 9/16"	1 1/8"	1 7/16"	3"
3" x 2"	7 3/4"	2 3/32"	1 1/2"	1 7/16"	3"
3" x 2 1/2"	8"	2 19/32"	2"	1 7/16"	3"
5" x 4"	8 3/4"	4 3/32"	3 1/2"	1 7/16"	3 1/2"



KPY Series Male Adapter Flange

Size	A	B	C	D	E	F
1 1/2"	3 1/32"	2 3/32"	1 1/4"	1 3/8"	7/16"	1 11/16"
2"	3 31/32"	2 15/32"	1 1/2"	1 3/8"	7/16"	2 1/16"
3"	4 19/32"	3 19/32"	2 1/2"	1 7/16"	1/2"	3 3/16"
4"	4 27/32"	4 23/32"	3 1/2"	1 7/16"	1/2"	4 5/16"

* 4" rated to 90 psi



Disclaimer:

All statements, data, and information contained herein are believed to be accurate and reliable but are presented without guarantee, warranty, or responsibility of any kind, expressed or implied. You expressly understand and agree that Salco Products assumes NO obligation or liability for the statements, data, and information given. Further, you expressly understand and agree that all results which may be obtained from any use of this document are to be accepted by you at your risk alone. Salco Products hereby DISCLAIMS ALL liability for any use of this document. You must evaluate and determine whether a material is suitable for your intended application.

We recommend that you perform tests to determine the propriety of a material for your particular purpose prior to use. In NO case shall anything contained in this document be considered a part of our terms and conditions of sale. Statements or suggestions concerning the possible use of any material are made WITHOUT representation of warranty that any such use is free of patent infringement. We do NOT recommend that any patent be infringed. The user should NOT assume that all safety measures are indicated or that other measures may not be required.

Pressure Rating Information



KC Series Threaded Hose Barb

Size	Material	End Connection Type	Max. Work Pressure @ Ambient Temp.	Max. Work Pressure @ -30° F	Max. Work Pressure @ +140° F
1"	PVC	NPT	200 psi	200 psi	200 psi
1 ¼"	PVC	NPT	200 psi	200 psi	170 psi
1 ½"	PVC	NPT	200 psi	200 psi	150 psi
2"	PVC	NPT	200 psi	200 psi	75 psi
3"	PVC	NPT	150 psi	150 psi	50 psi



BPY/BSS Series Flanged Hose Barb

Size	Material	End Connection Type	Max. Work Pressure @ Ambient Temp.	Max. Work Pressure @ -30° F	Max. Work Pressure @ +140° F
1"	UHMWPE	FLANGE	200 psi	200 psi	200 psi
1 ½"	UHMWPE	FLANGE	200 psi	200 psi	200 psi
2"	UHMWPE	FLANGE	200 psi	200 psi	175 psi
3"	UHMWPE	FLANGE	200 psi	200 psi	150 psi
4"	UHMWPE	FLANGE	150 psi	150 psi	125 psi



KEP Series Male Adapter Hose Barb

KEP series is rated to **35 psi** (working pressure)

KPY Series Reinforced Male Adapter

Reinforced cam fittings are all tested in house and field rated to **150 psi**

Steel Reinforced UHMWPE Blind Flange

Reinforced blind flanges are tested to **210 psi** (Non-Reinforced **35 psi**)



COMMITTED TO INNOVATION

CORPORATE OFFICE 1385 101st Street, Suite A / Lemont, IL 60439

SALES (630) 783-2570

DISTRIBUTION/GATE REPAIR (281) 351-0274

FAX (630) 783-2590

WEBSITE www.salcoproducts.com

The most current revision of this information can be found on our website at www.salcoproducts.com and supersedes all other versions. Please check the revision date information of any printed materials to ensure the most current information is being referenced.



Document Reference: Rev. A 07/19