

APPLICATION FOR RENEWAL OF APPROVAL FOR PRESSURE RELIEF DEVICES, VALVES, CLOSURES, AND FITTINGS

1. AAR APPROVAL No. E202147
 2. Date of Application 10/01/2019
 3. Previous AAR Approval E-099036
4. Applicant: Salco Products Inc.
 5. Address: 1385 101st Street, Suite A, Lemont IL 60439
 6. Drawing No. E49423 7. Latest rev. A 8. Date of latest rev. 10/01/2019
 9. Description of device: Fill Hole Cover 9" Lined 10. Device ID No. LCXXXAVPE

CERTIFICATION: The subject device is **unchanged** from the previous approval, and conforms with the latest revision of AAR Specifications for Tank Cars, Appendix A. The device conforms with drawing listed above.

11. By: _____ Title: _____

If device is **changed** since latest approval, fill in the following blanks

- | 12. Reference Previous Drawing | New Drawing | If on Service Trial |
|--|---|---------------------|
| No. <u>LC920AVPE</u> Rev. <u>G</u> Date <u>11/9/17</u> | No. <u>LCXXXAVPE</u> Rev. <u>A</u> Date <u>10/01/2019</u> | S.T. No. _____ |
| No. _____ Rev. _____ Date _____ | No. _____ Rev. _____ Date _____ | S.T. No. _____ |
| No. _____ Rev. _____ Date _____ | No. _____ Rev. _____ Date _____ | S.T. No. _____ |

13. New drawing supersedes previous one or does not obsolete it

CHANGES

REASONS FOR CHANGES

- | | |
|--|--|
| 14. a. <u>New Drawing Number</u>
b. _____
c. _____
d. _____
(if needed use supplemental sheet) | a. <u>Reorganized old drawing into a new chart</u>
b. <u>drawing.</u>
c. _____
d. _____ |
|--|--|

15. Normal operational effect of changes of device: None - This is a clerical update the the drawing structure.
- _____
- _____

16. Drawing submitted with this application: LCXXXAVPE

CERTIFICATION: The above data is correct and conforms with AAR Specifications for Tank Cars, Appendix A. The device conforms with drawing listed above.

17. By: _____ Title: _____

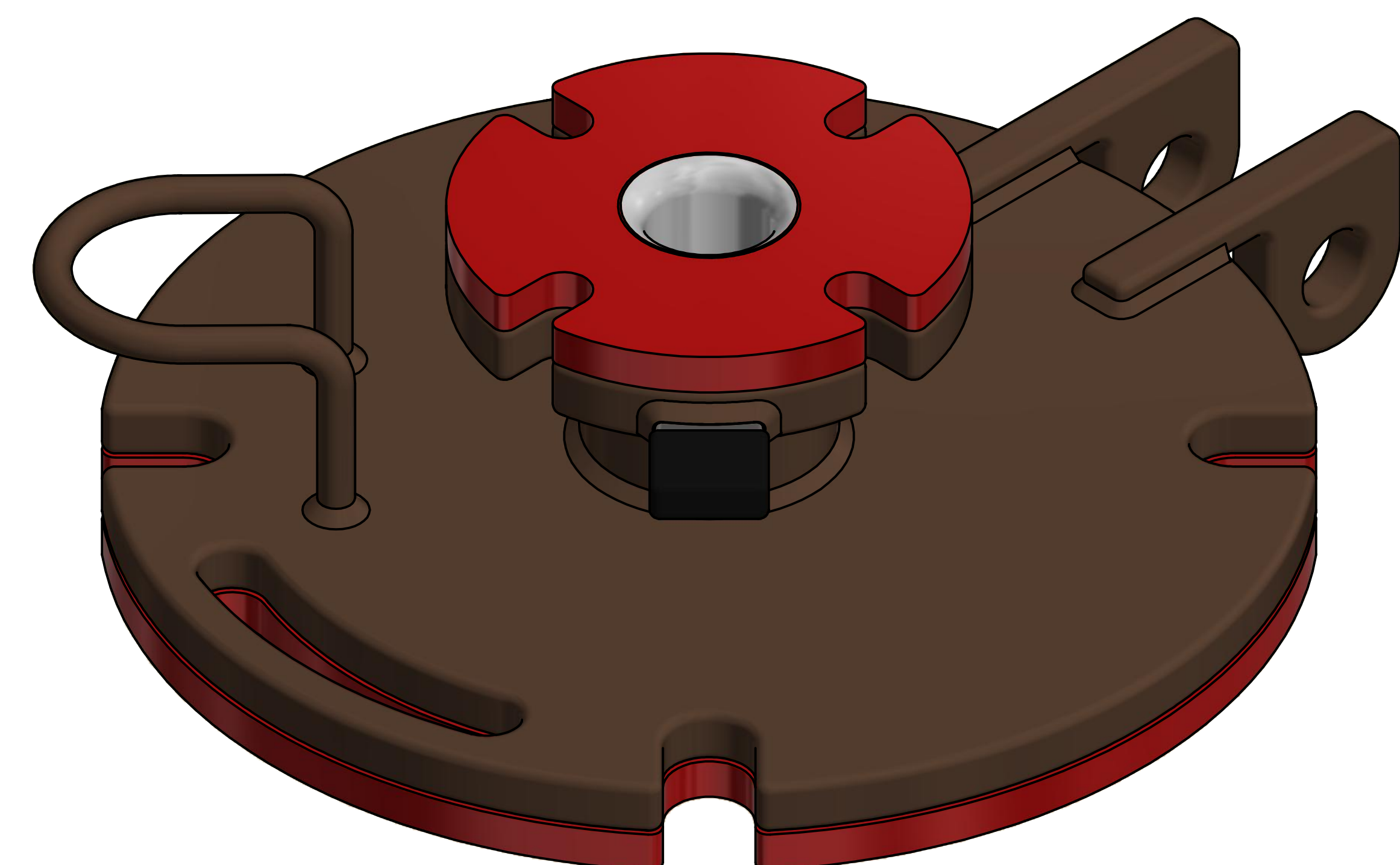
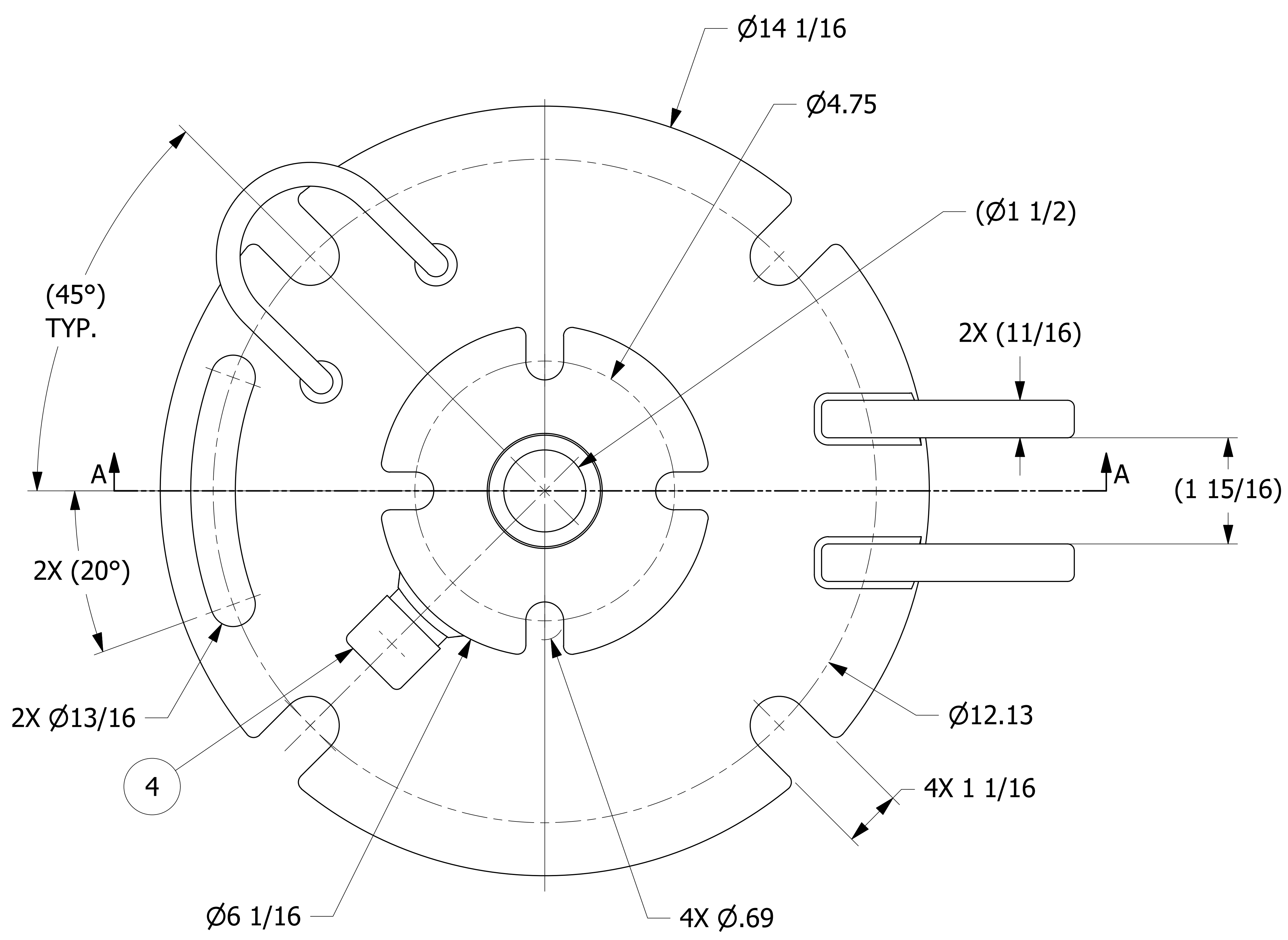
APPROVAL AAR Tank Car Committee:



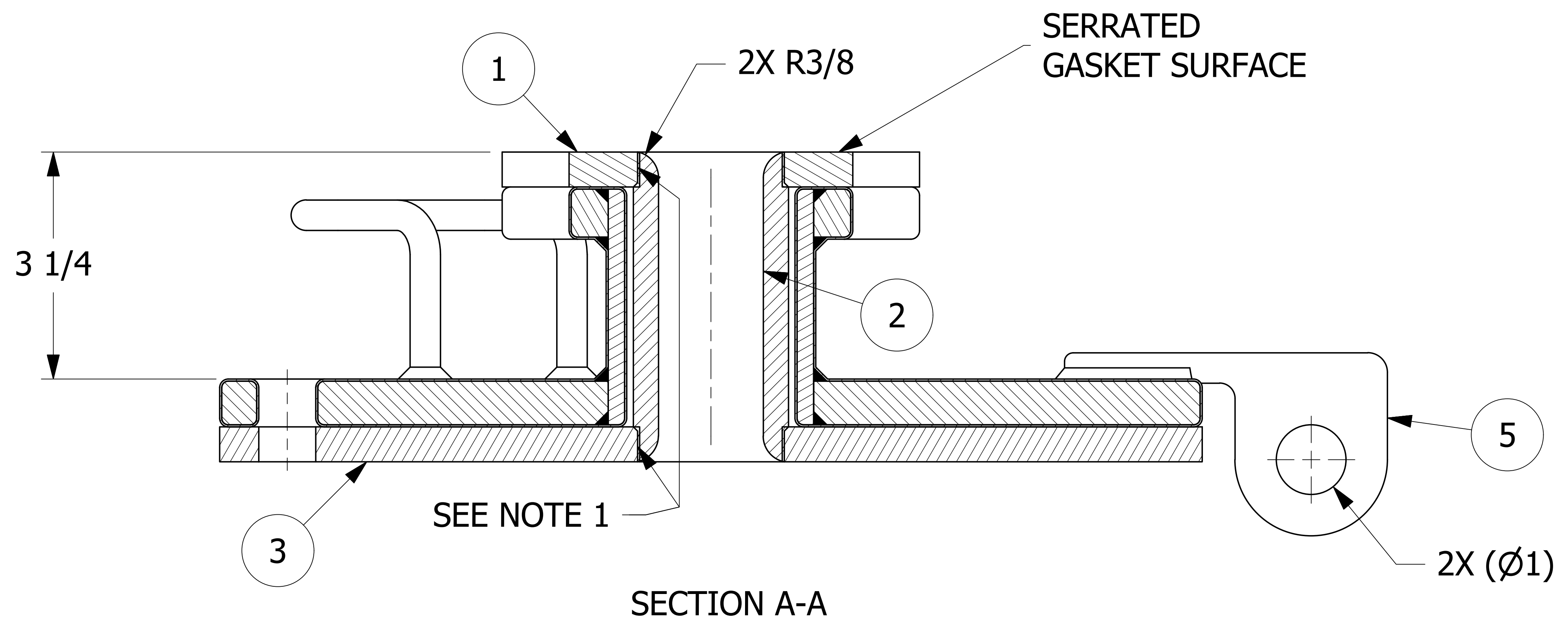
Date Approved: 8/14/2020

(Signature) on behalf of Committee

NO.	PART NAME	PART#	REQ'D	MATERIAL
1	FLANGE LINER	A28200	1	SALCO PE
2	LINING 1/4"	A38966	1	SALCO PE
3	LINING 1/2"	C31618	1	SALCO PE
4	VINYL CAP 1 3/8"X1 1/8"X1/2"	CPV375X125	1	VINYL
5	FILL HOLE COVER 9" COATED	LC920AVHCLPVDF	1	CS/SS/PVDF



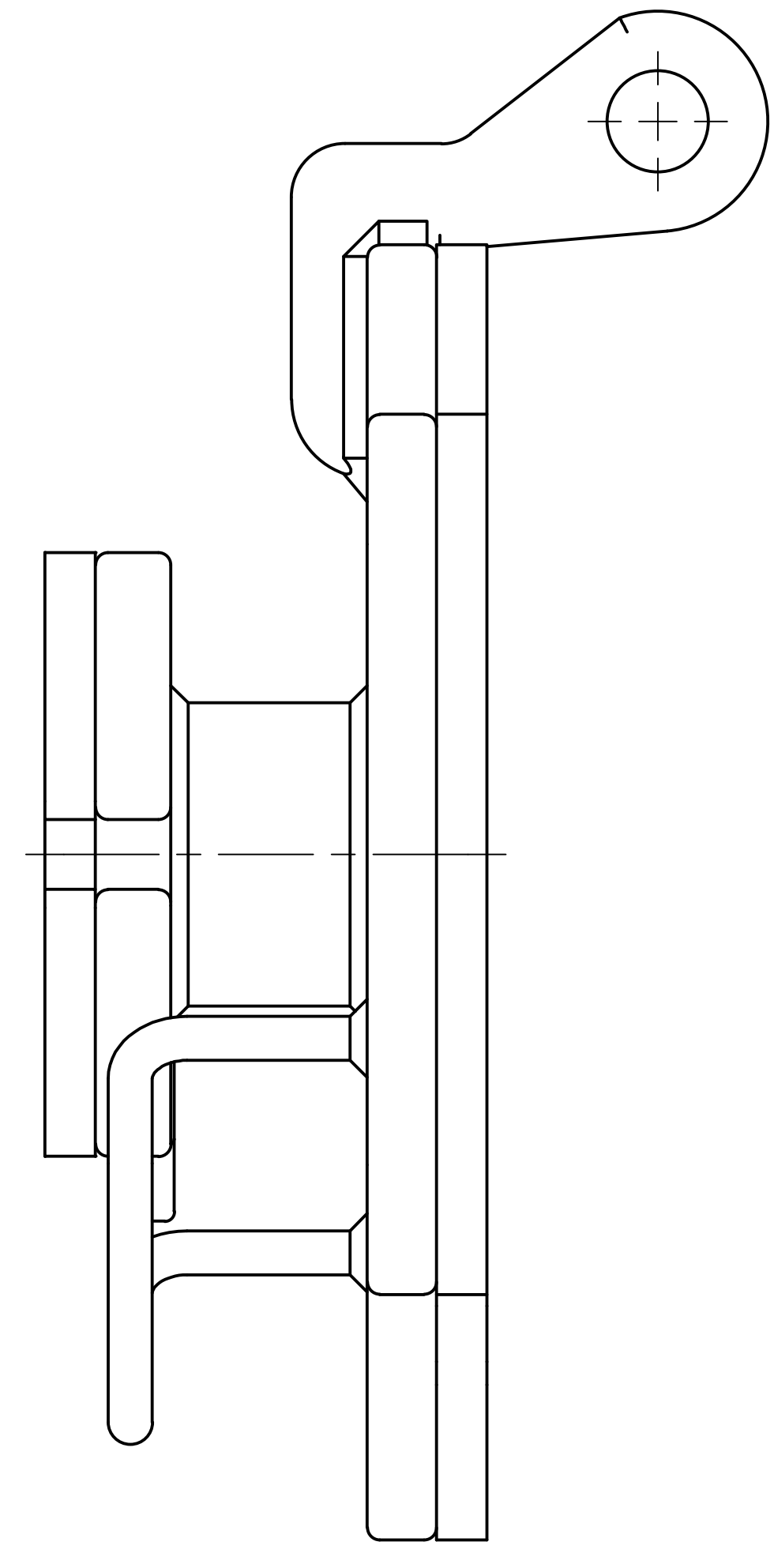
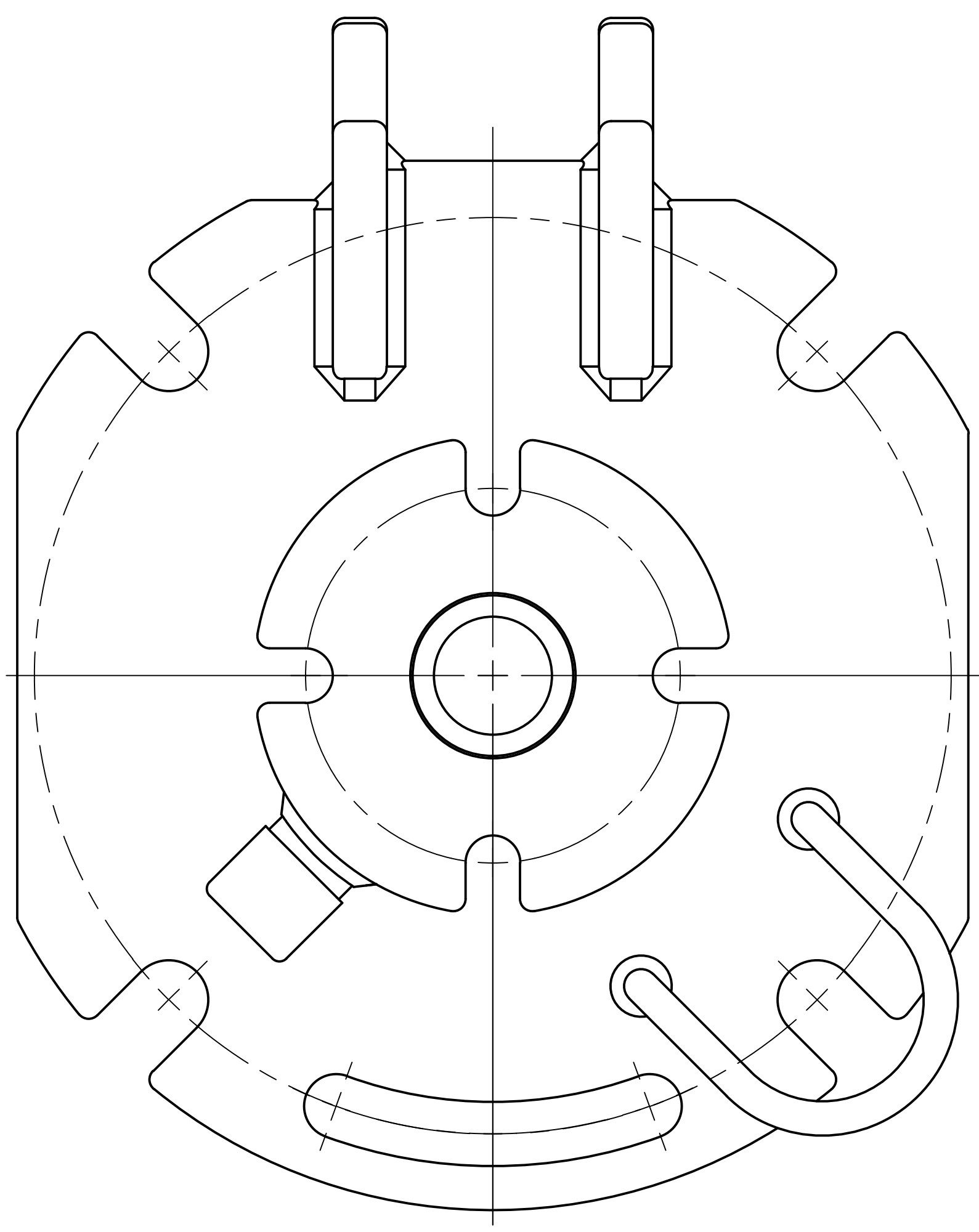
ISOMETRIC VIEW



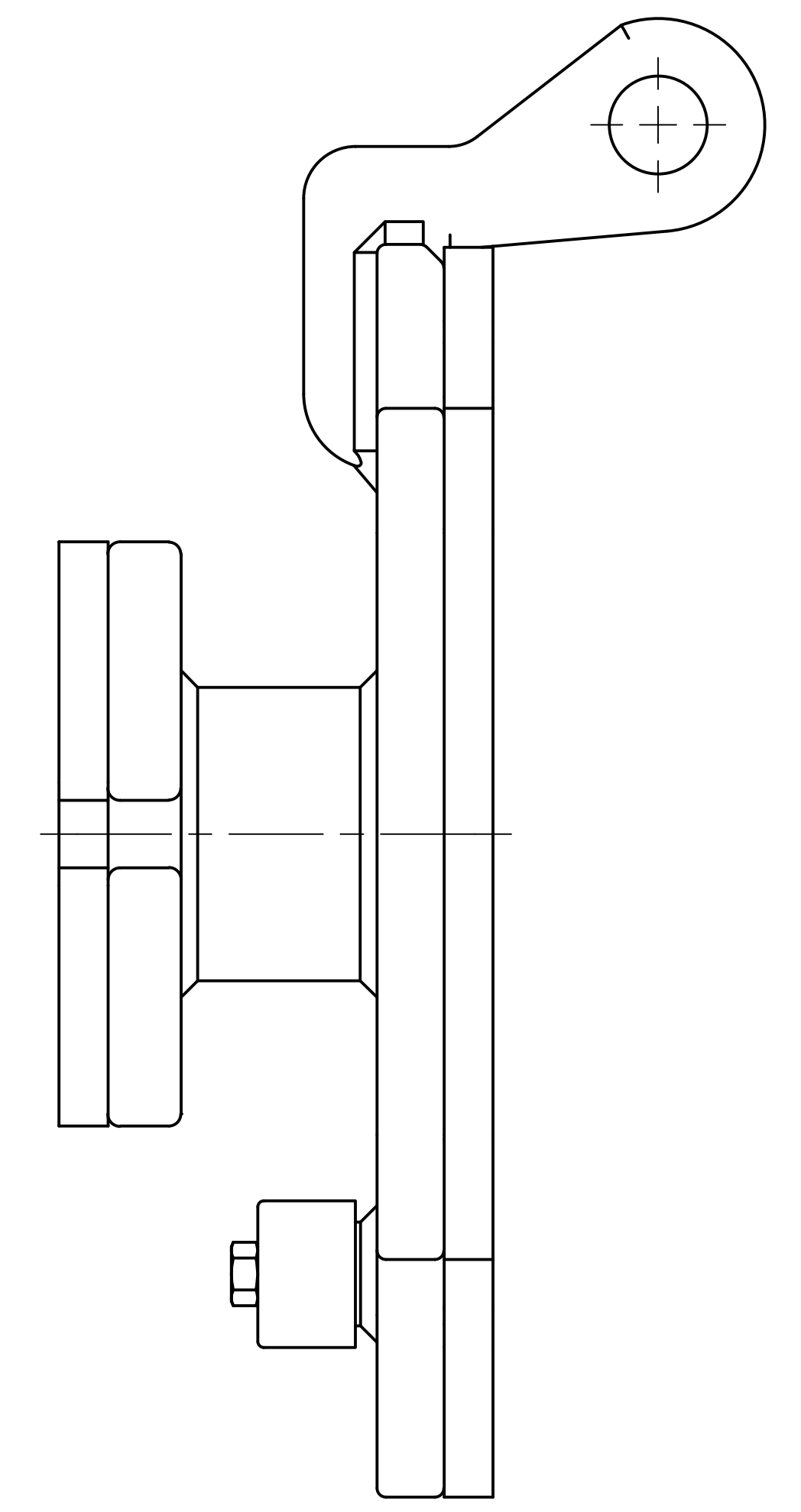
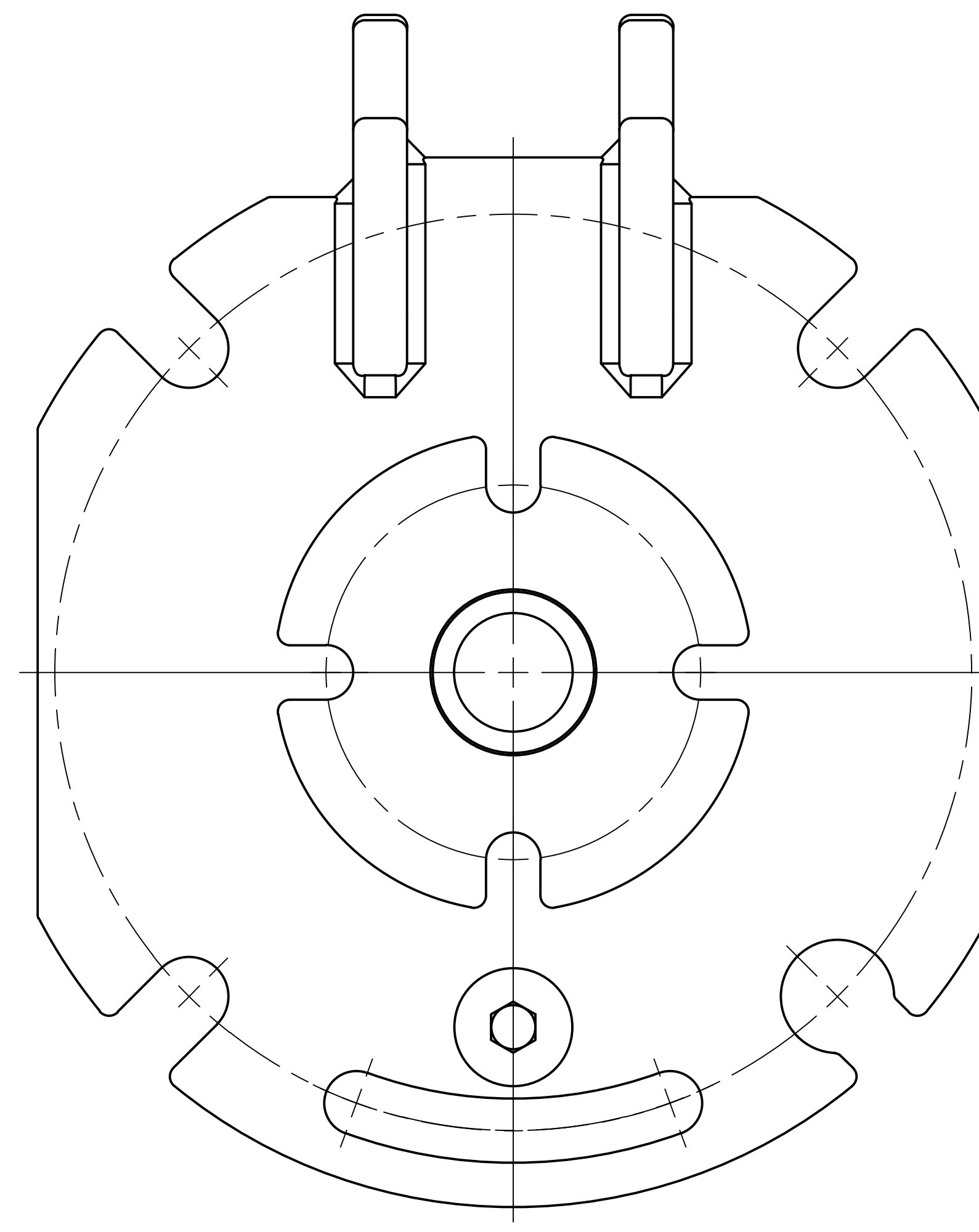
- NOTES:
1. SEE DOCUMENT DSS 3 FOR FRICTION WELDING SPECIFICATIONS.
 2. SPARK TEST PER Q-2.15.11.
 3. AAR APPROVAL # E-202147.
 4. TEST PER Q-2.15.7.
 5. APPROXIMATE WEIGHT 36 LBS.

UNLESS OTHERWISE SPECIFIED DIMENSIONAL TOLERANCES	DRAWN BY:	CHL
FRACTIONAL: ±1/16	CHECKED BY:	WRB
X.XX: ±.03	PROTOTYPE DATE:	8/28/2019
X.XXX: ±.015	APPROVED FOR PRODUCTION BY:	WRB
ANGULAR: ±1°	PRODUCTION DATE:	10/1/2019
DEBURR ALL SHARP EDGES. ALL MACHINED SURFACES TO HAVE A 125 RMS FINISH UNLESS NOTED OTHERWISE.	SIZE:	E
THIRD ANGLE PROJECTION	DRAWING #:	49423

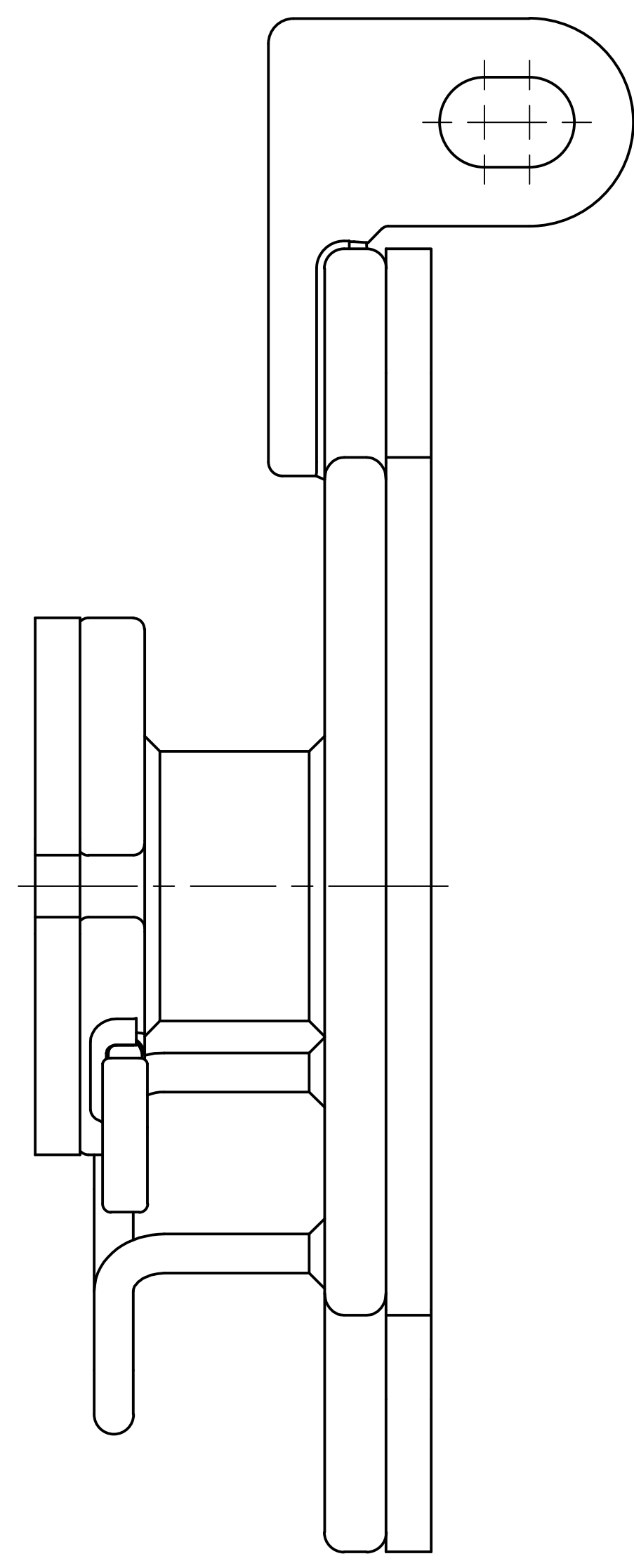
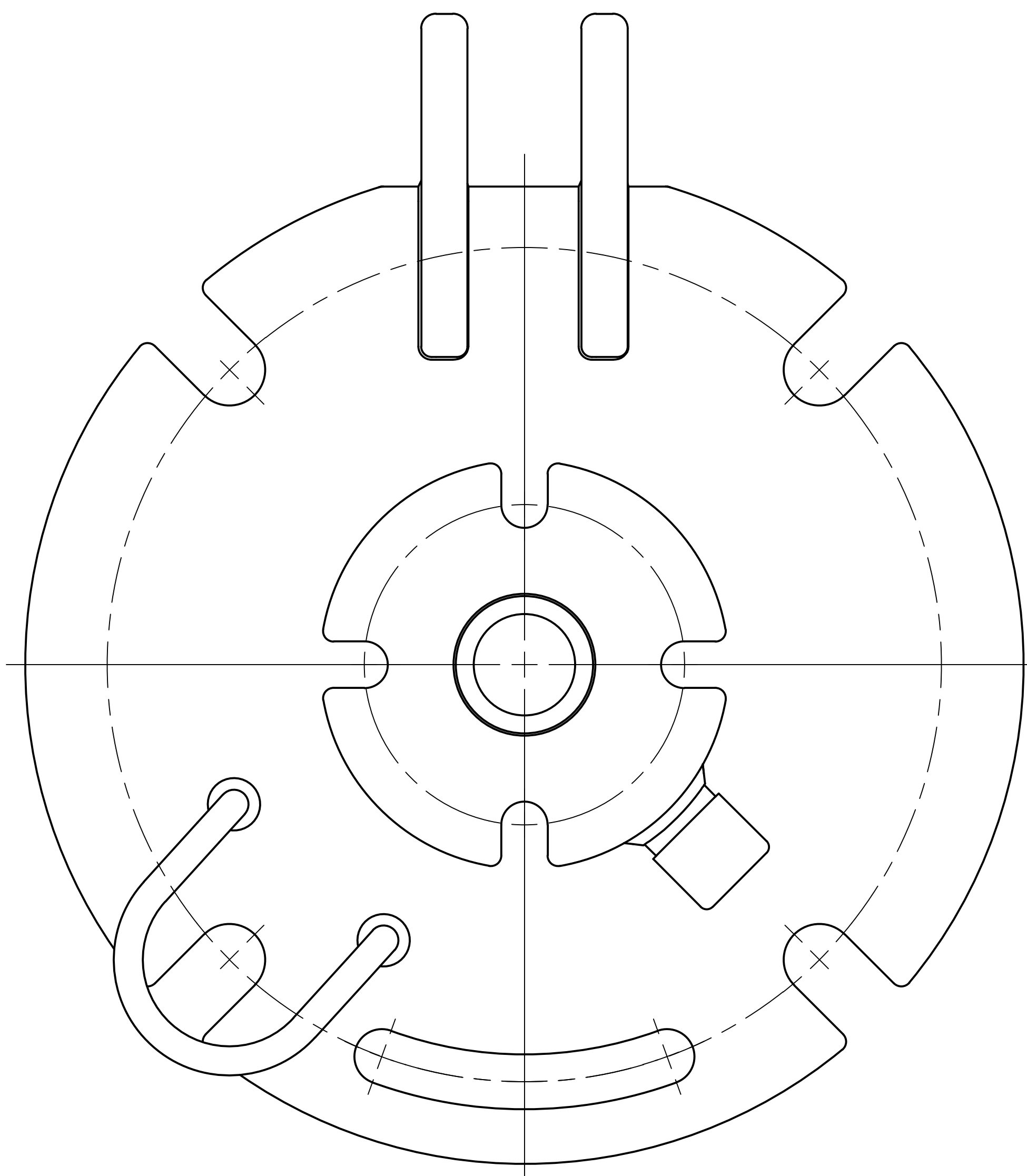
B		AAR APPROVAL # WAS E-099036, UPDATED TITLEBLOCK
A	CHL	10/1/19 RELEASED FOR PRODUCTION
REV	BY	DATE DESCRIPTION
SALCO PRODUCTS, INC.		
PART NAME: FILL HOLE COVER 9" LINED		
MATERIAL: SEE BOM		
PROJECT #:	090817	SHEET #: 1 OF 2 SCALE: 1 : 1
PART #: LCXXXAVPE		



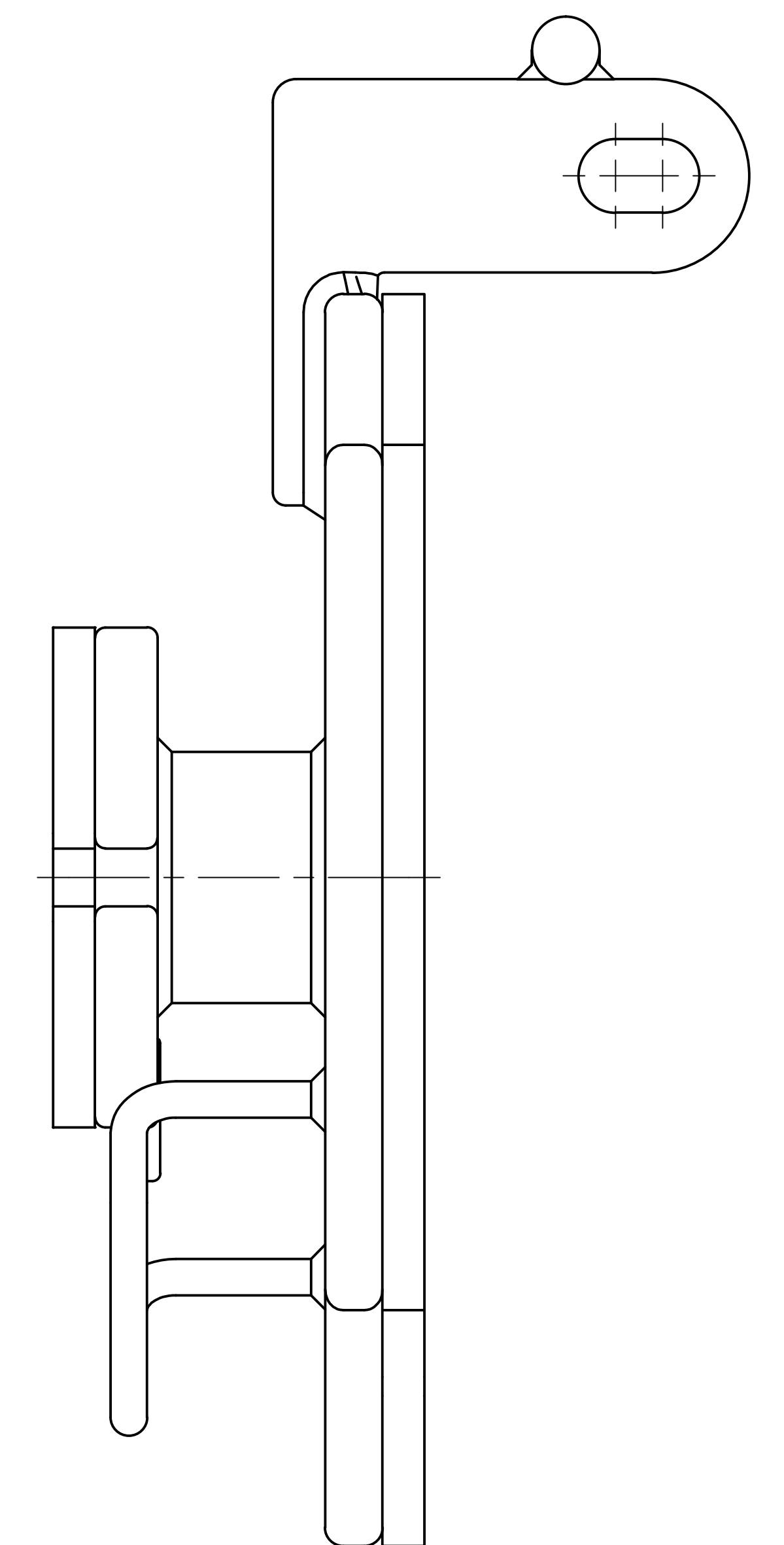
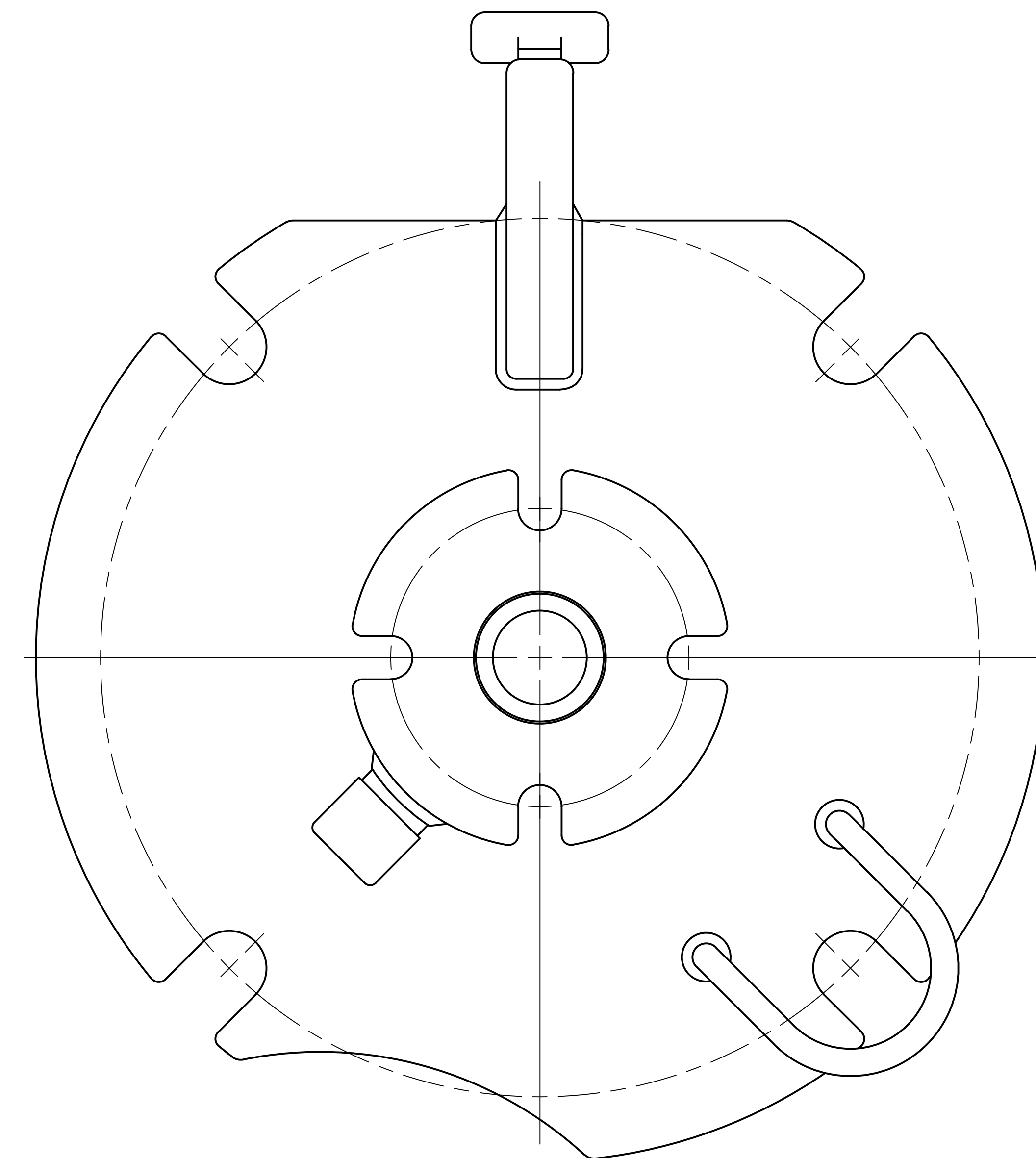
8" X 2" FILL HOLE COVER



8" X 2" FILL HOLE COVER



9" X 2" FILL HOLE COVER



9" X 2" FILL HOLE COVER