

**AAR Manual of Standards and Recommended Practices  
Specifications for Tank Cars**

CHAPTER 1

M-1002

**APPLICATION FOR RENEWAL OF APPROVAL FOR PRESSURE RELIEF  
DEVICES, VALVES, CLOSURES, AND FITTINGS**

1. AAR APPROVAL No. E202151  
 2. Date of Application 02-08-20  
 3. Previous AAR Approval E118025  
 4. Applicant: CONBRACO INDUSTRIES INCORPORATED  
 5. Address: PO BOX 125 PAGELAND, SC 29728  
 6. Drawing No. 76F-100-01A 7. Latest rev. A 8. Date of latest rev. 03-08-17  
 9. Description of device: 3" AND SMALLER, TWO-PIECE, FULL PORT BALL VALVE 10. Device ID No. 76F SERIES  
STAINLESS STEEL, THREADED END CONNECTION, 1000 PSIG CWP

**CERTIFICATION:** The subject device is **unchanged** from the previous approval, and conforms with the latest revision of AAR Specifications for Tank Cars, Appendix A. The device conforms with drawing listed above.

11. By: \_\_\_\_\_ Title: \_\_\_\_\_

If device is changed since latest approval, fill in the following blanks

12. Reference Previous Drawing	New Drawing	If on Service Trial
No. _____ Rev. _____ Date _____	No. <u>76FXXX24SP1</u> Rev. <u>A</u> Date <u>10/26/20</u>	S.T. No. _____
No. _____ Rev. _____ Date _____	No. _____ Rev. _____ Date _____	S.T. No. _____
No. _____ Rev. _____ Date _____	No. _____ Rev. _____ Date _____	S.T. No. _____

13. New drawing supersedes previous one  or does not obsolete it

**CHANGES**

**REASONS FOR CHANGES**

14. a. <u>External change for single flanged configuration</u>	a. <u>Compliance to new AAR regulations on tank car primary connections</u>
b. _____	b. _____
c. _____	c. _____
d. _____	d. _____

(if needed use supplemental sheet)

15. Normal operational effect of changes of device: None. Same functional internal components (ball, stem, seat, seals, etc.) for equivalent operating torque and sealing performance. Same outboard connection (NPT).

16. Drawing submitted with this application: 76FXXX24SP1

**CERTIFICATION:** The above data is correct and conforms with AAR Specifications for Tank Cars, Appendix A. The device conforms with drawing listed above.

17. By: TRAVIS HAMILTON Title: PROJECT ENGINEER

APPROVAL AAR Tank Car Committee:

*Kenneth B Dorsey*

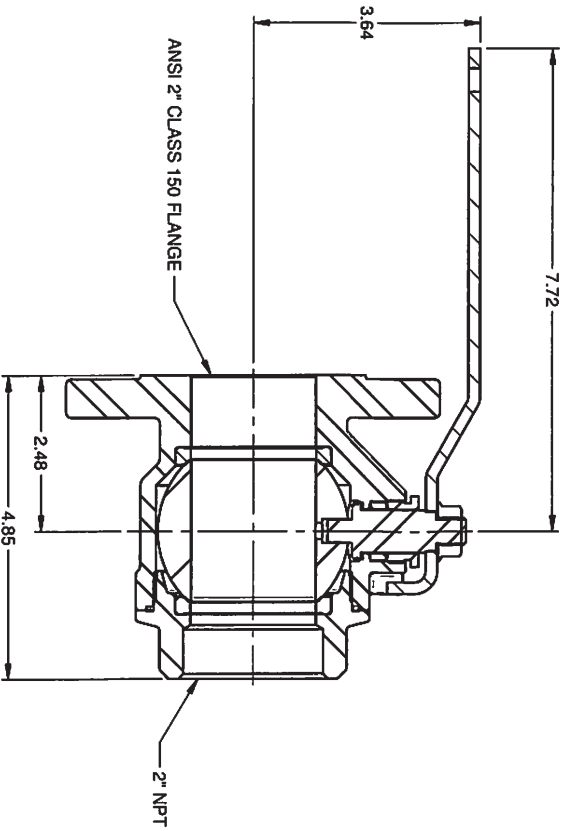
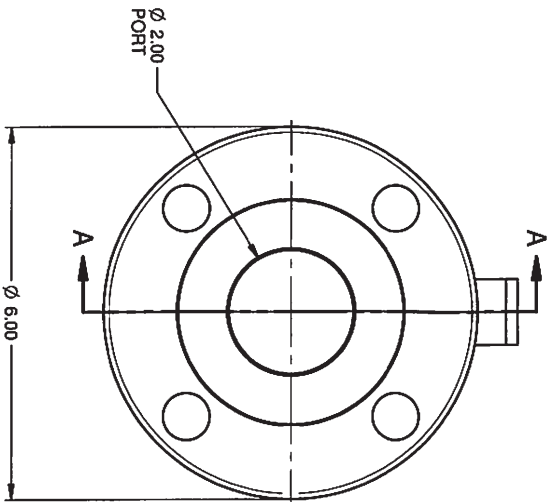
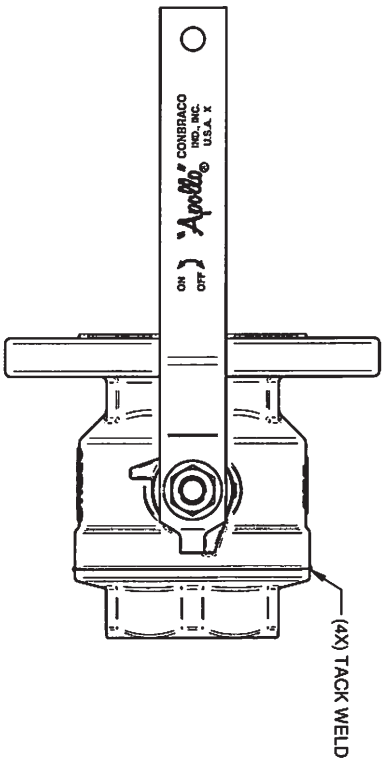
Date Approved: 11/24/2020

(Signature) on behalf of Committee

Form AAR 4-7 8/1/2014

**Fig. 1.5 Form AAR 4-7 Application for Renewal of Approval for Pressure Relief Devices, Valves, Closures, and Fittings**

PART NO.	DESCRIPTION	QTY.
B130706	GLAND PKG. 1-24X. 515. 316SS	1
C202000	NUT, FLANGE, 7/16-20, SS	1
D511100	BEARING, STEM, R/P T/E, BV, 76F SER	1
D511200	SEAL, 3.405OD, 3.200ID, .072THK	1
D200000	PACKING, STEM, BV, GRPH	1
D578500	SEAT, DYNEON, 2", 76F	2
G496306	STEM, 2", 76F SER, SS	1
I735405	HANG TAG, YELLOW	1
K452100	BALL, SS, SLOT VENT	1
L852205	RETAINER, 2" NPT, CF8M SS, 76F SER	1
U263505	BODY, 2" 150#, CF8M SS, 76F SER	1
W635700	LVR/GRIP, SS (H-2705, APOLLO)	1



SECTION A-A

NOTE: This drawing and the subject matter depicted therein is the property of Conbraco Industries, Inc. and is not to be copied, used, reproduced or disclosed to others without the expressed written permission of Conbraco Industries, Inc.

NAME: BV 2" NPT X 150 FLANGE, PP, SS, GRPH, 4 TACK

WELDS

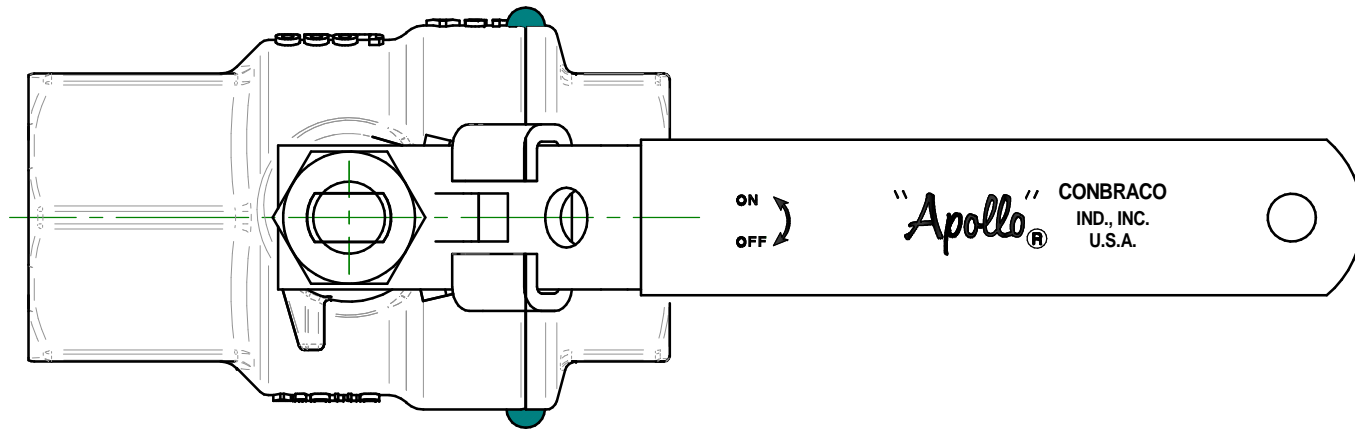
MAT'L: SEE CHART

REV	CHANGE DESCRIPTION	EDN NO.	BY	DATE

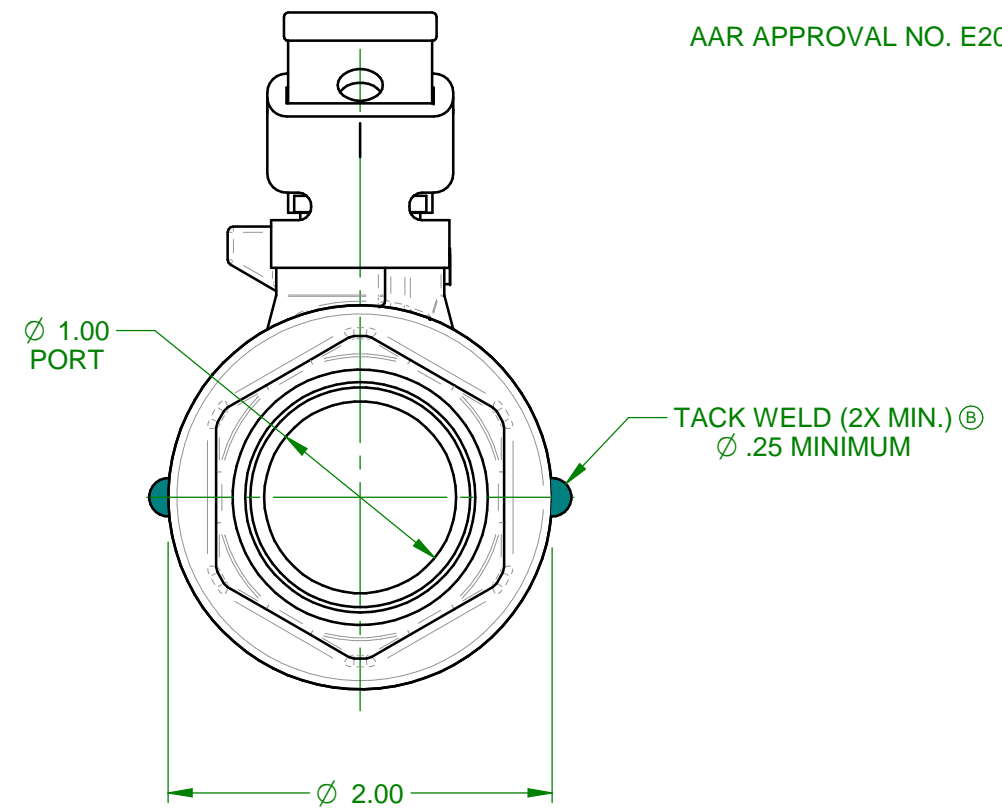
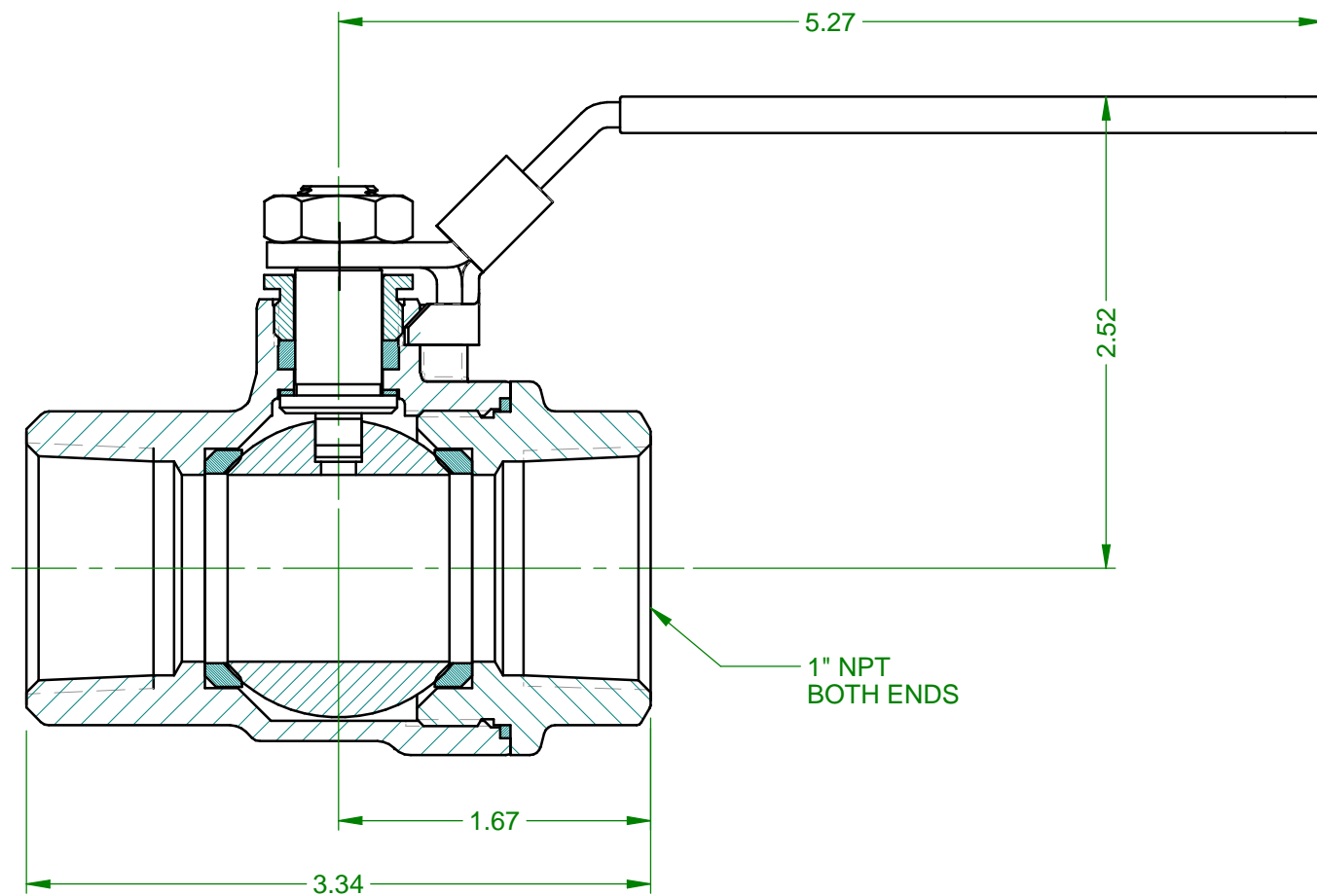
EXP. NO.	SCALE:	DRN.:	DATE:	CHKD.:	APP'D.:	NO.	REV.
	1:2	TH	7/21/20	WGH	CRP	76F39824SP1	A

NOTE: VALVE SHOWN IN OPEN POSITION.





PART NO.	DESCRIPTION	QTY.
B130606	GLAND,PKG,11/16-24X.35,316SS	1
C153300	NUT,HEX JAM,7/16-20 304SS	1
D510000	SEAT,RPTFE,BV,76F105	2
D509900	BEARING,STEM,BV,RPTFE,76F	1
D199900	PACKING,STEM,BV,GRPH	1
G495306	STEM,1",76F SER,SS	1
L847305	RETAINER,MACH,1"NPT,SS,	1
U119305	BODY,MACH,1"NPT,CF8M SS,	1
W648300	LTCH LVR/GRIP (W6171,APOLLO)	1
K461309	BALL,SS,SLOT VENT	1
D509700	SEAL,1.801OD,1.687ID,.072THK	1



AAR APPROVAL NO. E202151

NOTE: VALVE SHOWN IN OPEN POSITION.

NOTE: This drawing and the subject matter disclosed therein is the property of Conbraco Industries, Inc. and is not to be copied, used, appropriated or disclosed to others without the expressed written permission of Conbraco Industries, Inc.

**"Apollo" valves**

NAME: BV,1" NPT,FP,SS,GRPH,LTCH,2 TACK WELDS

MAT'L: SEE CHART

EXP. NO.	SCALE:	DRN:	DATE:	CHKD:	APPD:	NO.	REV.
	1:1	DKH	02/02/16	CRT	KDB	76F1052427SP1	A

REV.	CHANGE DESCRIPTION	ECN NO.	BY	DATE