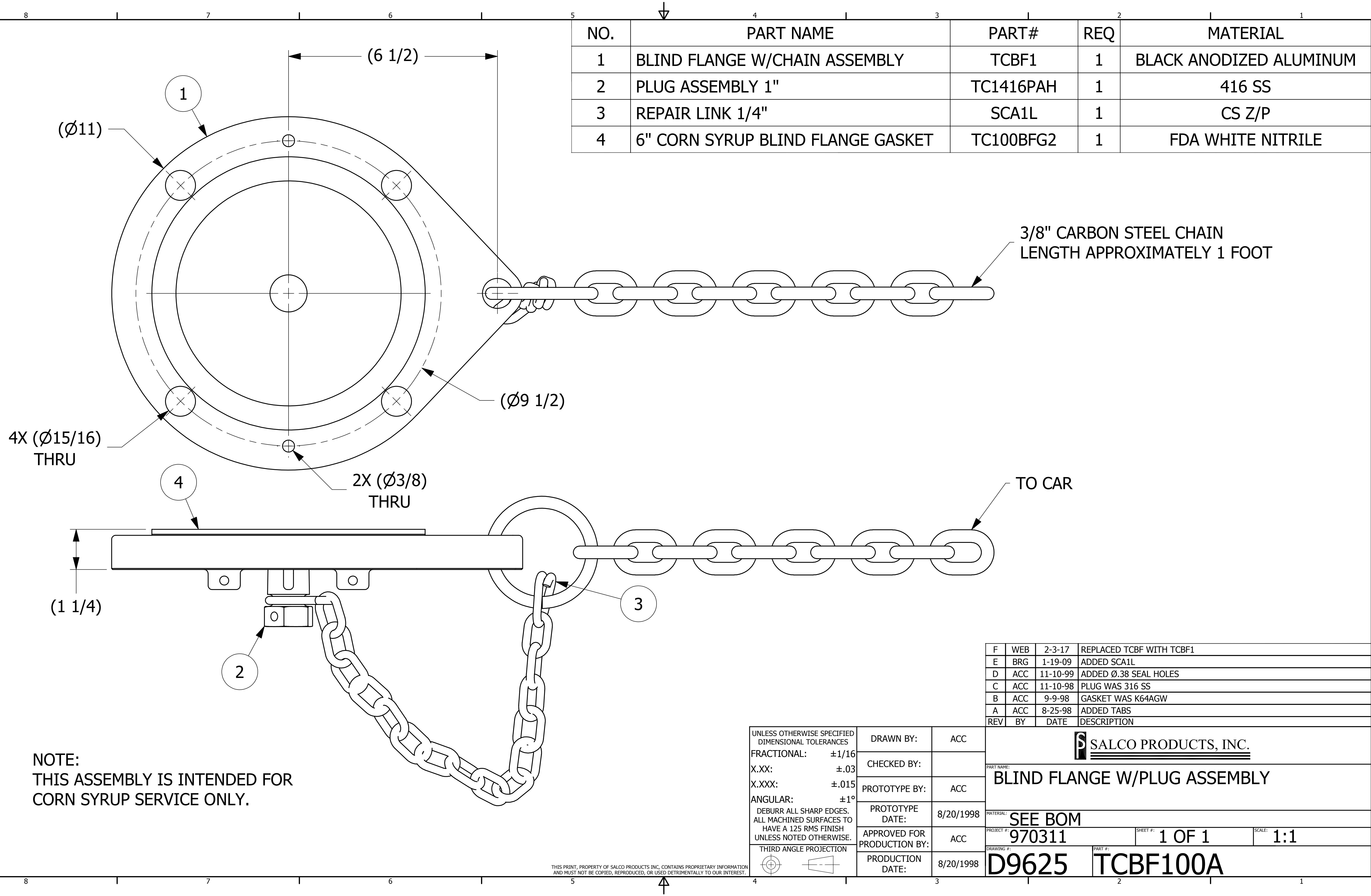


NO.	PART NAME	PART#	REQ	MATERIAL
1	BLIND FLANGE W/CHAIN ASSEMBLY	TCBF1	1	BLACK ANODIZED ALUMINUM
2	PLUG ASSEMBLY 1"	TC1416PAH	1	416 SS
3	REPAIR LINK 1/4"	SCA1L	1	CS Z/P
4	6" CORN SYRUP BLIND FLANGE GASKET	TC100BFG2	1	FDA WHITE NITRILE



3/8" CARBON STEEL CHAIN  
LENGTH APPROXIMATELY 1 FOOT

TO CAR

4X (Ø15/16)  
THRU

2X (Ø3/8)  
THRU

(1 1/4)

(6 1/2)

(Ø9 1/2)

NOTE:  
THIS ASSEMBLY IS INTENDED FOR  
CORN SYRUP SERVICE ONLY.

REV	BY	DATE	DESCRIPTION
F	WEB	2-3-17	REPLACED TCBF WITH TCBF1
E	BRG	1-19-09	ADDED SCA1L
D	ACC	11-10-99	ADDED Ø.38 SEAL HOLES
C	ACC	11-10-98	PLUG WAS 316 SS
B	ACC	9-9-98	GASKET WAS K64AGW
A	ACC	8-25-98	ADDED TABS

UNLESS OTHERWISE SPECIFIED DIMENSIONAL TOLERANCES	DRAWN BY:	ACC
FRACTIONAL: ±1/16	CHECKED BY:	
X.XX: ±.03	PROTOTYPE BY:	ACC
X.XXX: ±.015	PROTOTYPE DATE:	8/20/1998
ANGULAR: ±1°	APPROVED FOR PRODUCTION BY:	ACC
DEBURR ALL SHARP EDGES. ALL MACHINED SURFACES TO HAVE A 125 RMS FINISH UNLESS NOTED OTHERWISE.	PRODUCTION DATE:	8/20/1998
THIRD ANGLE PROJECTION		

**SALCO PRODUCTS, INC.**

PART NAME: <b>BLIND FLANGE W/PLUG ASSEMBLY</b>		
MATERIAL: <b>SEE BOM</b>		
PROJECT #: <b>970311</b>	SHEET #: <b>1 OF 1</b>	SCALE: <b>1:1</b>
DRAWING #: <b>D9625</b>	PART #: <b>TCBF100A</b>	

THIS PRINT, PROPERTY OF SALCO PRODUCTS INC. CONTAINS PROPRIETARY INFORMATION AND MUST NOT BE COPIED, REPRODUCED, OR USED DETRIMENTALLY TO OUR INTEREST.