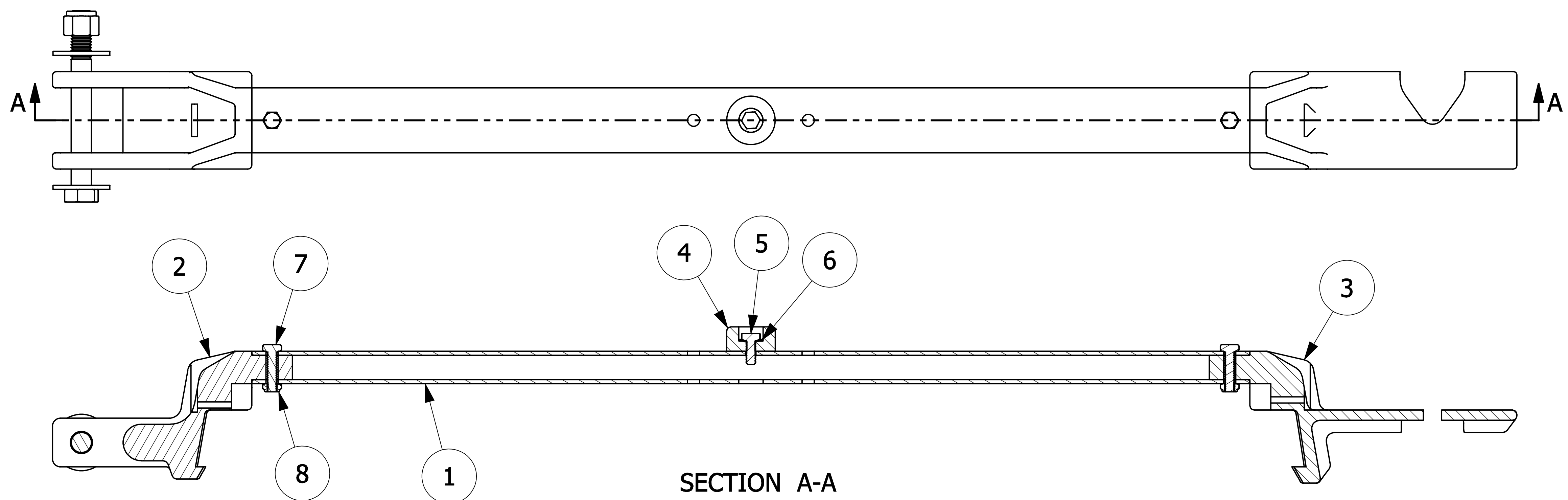


NO.	PART NAME	PART#	REQ'D	MATERIAL
1	HATCH COVER ARM	AE3007	1	ALUMINUM
2	HATCH COVER HINGE ASSEMBLY 30"	HEC3007PSTA	1	SEE DWG
3	HATCH COVER LATCH END 30"	LEC30PST	1	ALUMINUM
4	BUMPER	PHC30B	1	SBR
5	HEX BOLT 5/16"-18 X 3/4"	GA34	1	CS Z/P
6	SPRING WASHER 3/8"	KL103SW	1	1074 CS
7	HEX BOLT 5/16"-18 X 1 1/4"	R20ABS	2	18-8 SS
8	HEX LOCK NUT 5/16"-18	R20ANS	2	18-8 SS



A	PJG	1-29-08	NEW PART ADDED TO SYSTEM
REV	BY	DATE	DESCRIPTION
			SALCO PRODUCTS, INC.
PART NAME:			HATCH COVER ARM ASSEMBLY 30"
MATERIAL:			SEE BOM
PROJECT #:	060314	SHEET #:	1 OF 1
DRAWING #:	D24333	PART #:	AE3007PSTA
APPROVED FOR PRODUCTION BY:		PJG	SCALE: 1:2
PRODUCTION DATE:		1/29/2008	

UNLESS OTHERWISE SPECIFIED DIMENSIONAL TOLERANCES	DRAWN BY:	WRB
FRACTIONAL: ±1/16	CHECKED BY:	PJG
X.XX: ±.03	PROTOTYPE BY:	WRB
X.XXX: ±.015	PROTOTYPE DATE:	10/26/2007
ANGULAR: ±1°	APPROVED FOR PRODUCTION BY:	PJG
THIRD ANGLE PROJECTION	PRODUCTION DATE:	1/29/2008

THIS PRINT, PROPERTY OF SALCO PRODUCTS INC, CONTAINS PROPRIETARY INFORMATION AND MUST NOT BE COPIED, REPRODUCED, OR USED DETRIMENTALLY TO OUR INTEREST.

