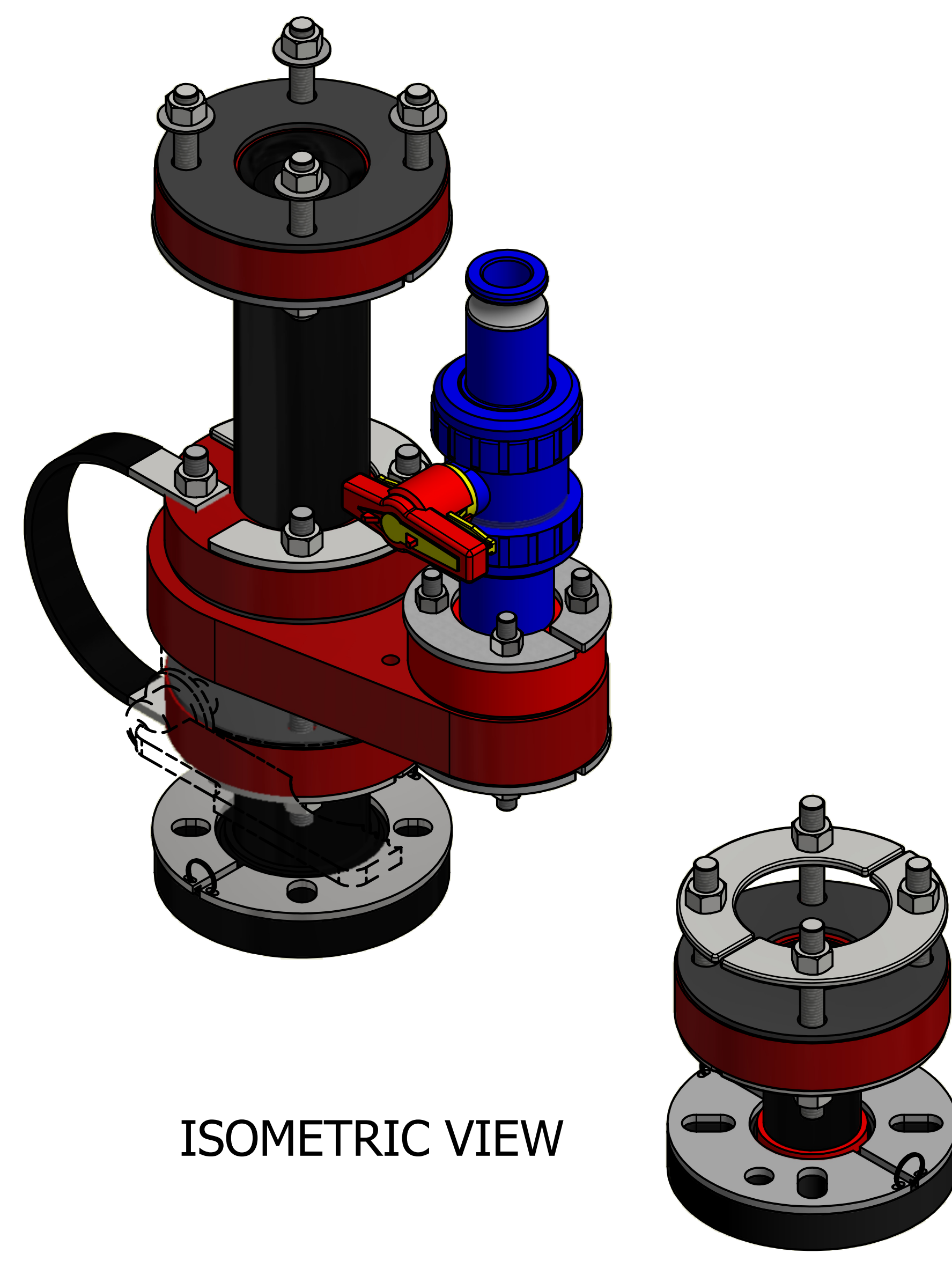
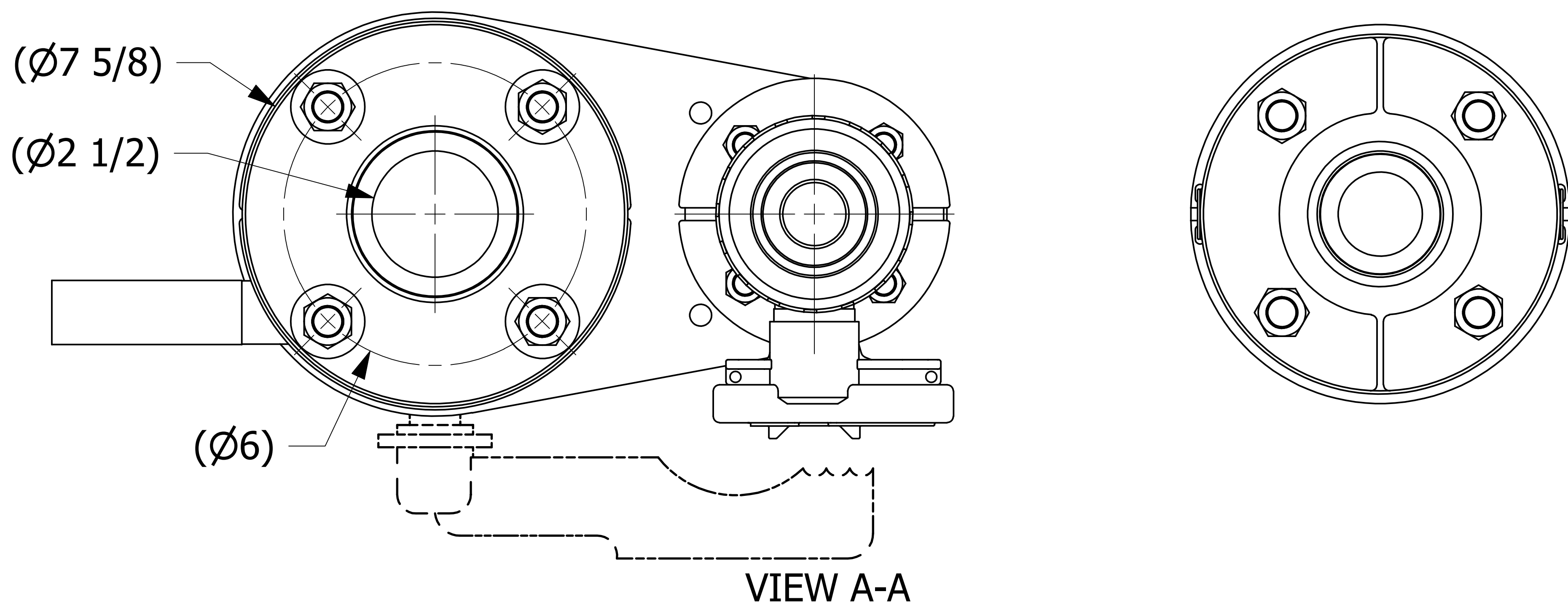
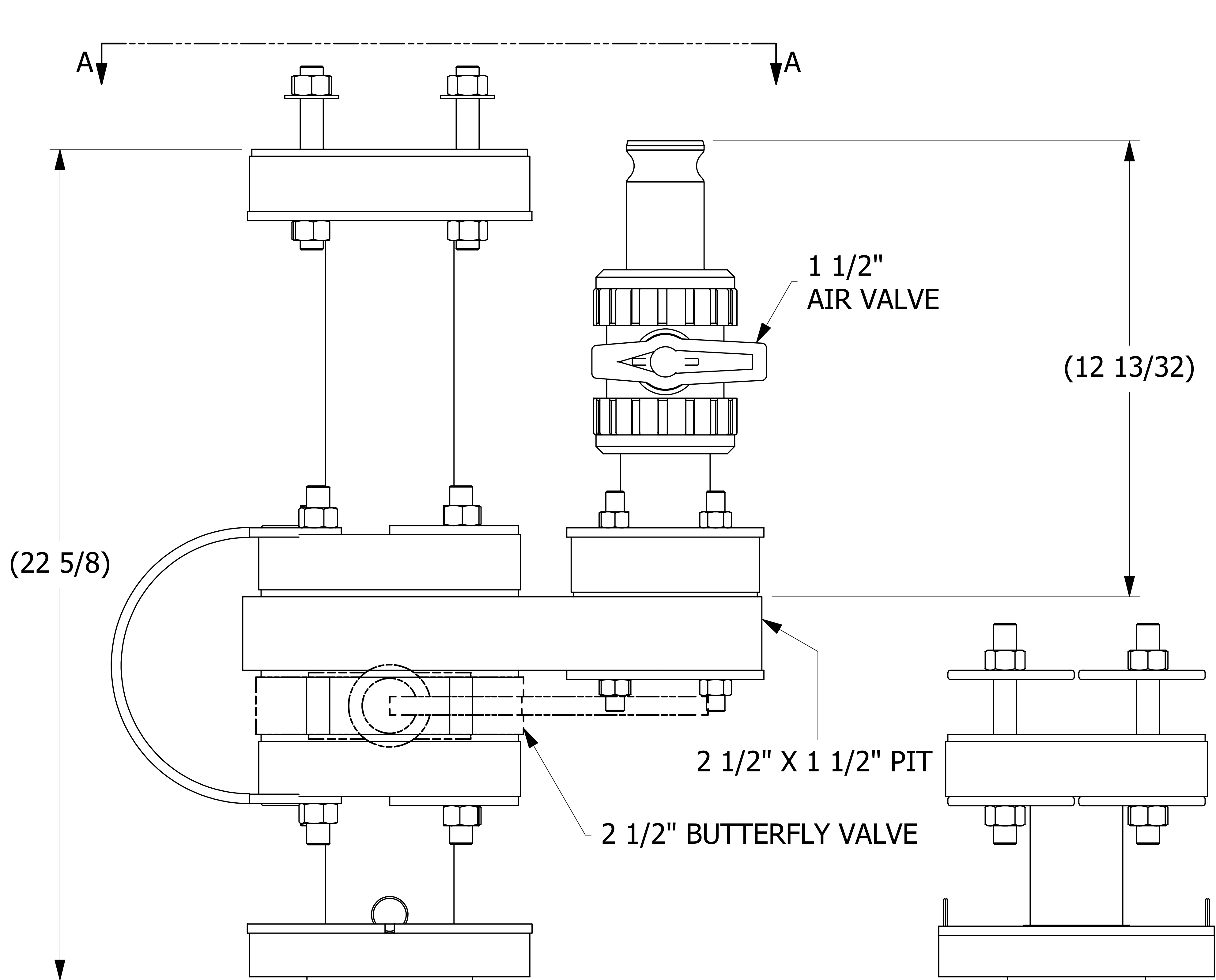
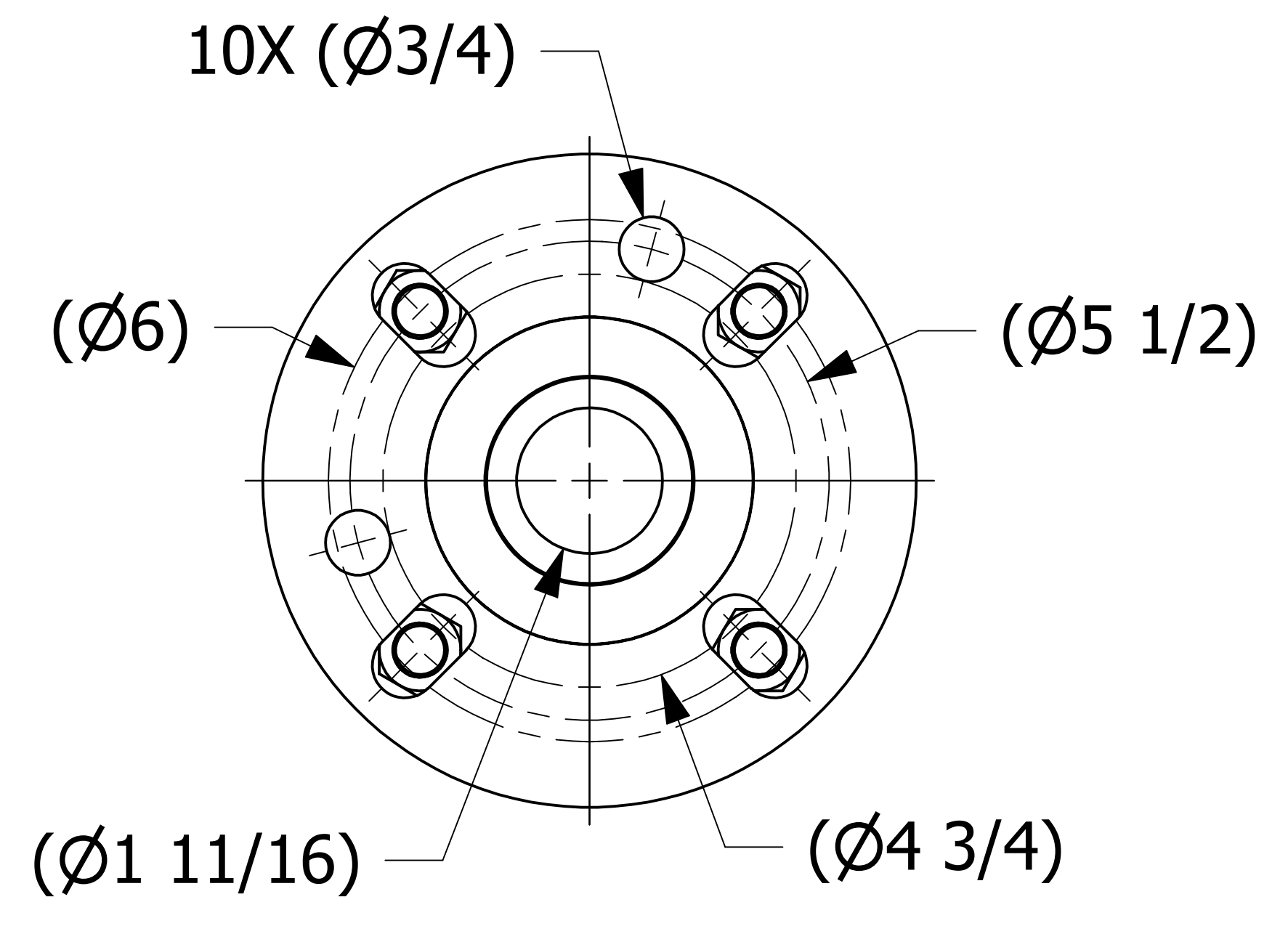
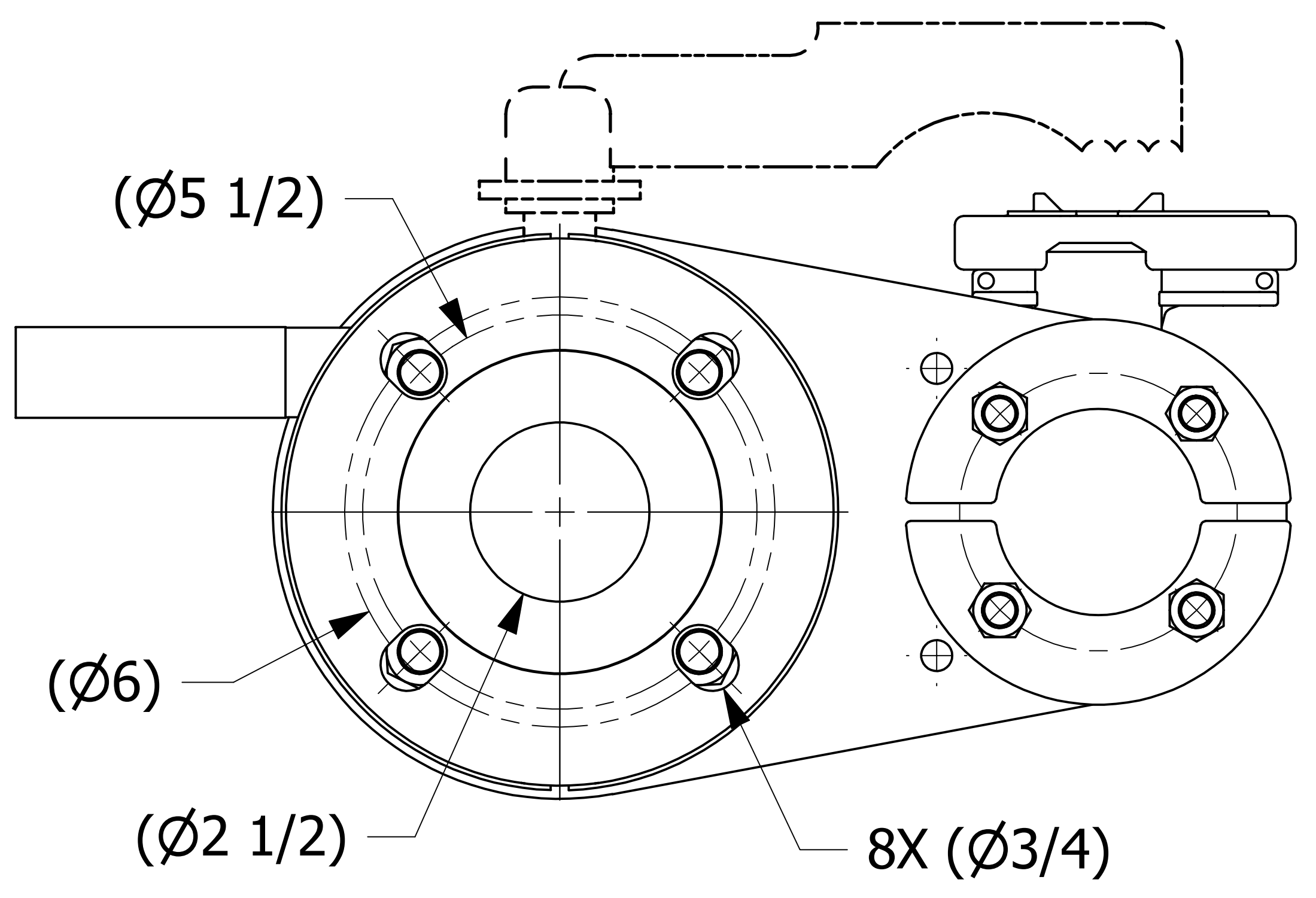


SALES DRAWING SALES DRAWING SALES DRAWING

SALES DRAWING SALES DRAWING SALES DRAWING



ISOMETRIC VIEW



- NOTES:  
 1. GASKET MATERIAL IS SULFUR CURED EPDM.  
 2. BUTTERFLY VALVE IS SOLD SEPARATELY.

REV	BY	DATE	DESCRIPTION
I	DGP	9-1-17	ADDED (1) WS475655S01A & (1) WS556S01A
H	DGP	03-07-16	UPDATED NOTES
G	DGP	02-16-16	REMOVED (1) FG2315003 & (4) STUD589SS. ADDED (1) HSSP253M65FP, (3) FG22515029, (1) FG2315029 (4) STUD586SS, (4) STUD58934SS, (4) WS55S05 (8) NUT58SS & SHEET 2. UPDATED NOTES.
F	DGP	09-30-15	UPDATED NOTES
E	JG	12-12-14	REMOVED AS3730-025 FROM BOM, REMOVED HSRK15PF REPLACED HSAVAPE33005 W/ HSAVAPE40423
D	TAK	8-13-13	REPLACED STUD125SS W/ STUD126SS
C	TAK	8-7-13	REPLACED HB70221, TSW916 W/ WS55S05, WS55S07 WS388S02, WS6S01 & STUD125SS
B	WEB	2-13-13	REPLACED B150F WITH HSRK15PF
A	BG	8-1-12	NEW PART ADDED TO THE NETWORK

UNLESS OTHERWISE SPECIFIED DIMENSIONAL TOLERANCES FRACTIONAL: ±1/16 X.XX: ±.03 X.XXX: ±.015 ANGULAR: ±1° DEBURR ALL SHARP EDGES. ALL MACHINED SURFACES TO HAVE A 125 RMS FINISH UNLESS NOTED OTHERWISE.	DRAWN BY: TAK
THIRD ANGLE PROJECTION	CHECKED BY: CHL
	PROTOTYPE BY: TAK
	PROTOTYPE DATE: 4/20/2012
	APPROVED FOR PRODUCTION BY: CHL
	PRODUCTION DATE: 8/1/2012

**SALCO PRODUCTS, INC.**

PART NAME: **VALVE ASSEMBLY 2"**

MATERIAL: **SALCO PE/SS**

PROJECT #: 031212AO	SHEET #: 1 OF 1	SCALE: 5:8
DRAWING #: <b>E32841</b>	PART #: <b>HSCSLSHMULA1</b>	