

APPLICATION FOR RENEWAL OF APPROVAL FOR PRESSURE RELIEF DEVICES, VALVES, CLOSURES, AND FITTINGS

1. AAR APPROVAL No. E202144
 2. Date of Application 10/01/2019
 3. Previous AAR Approval E-099032
4. Applicant: Salco Products Inc.
 5. Address: 1385 101st Street, Suite A, Lemont IL 60439
 6. Drawing No. D49415 7. Latest rev. A 8. Date of latest rev. 10/01/2019
 9. Description of device: Eduction Tube 4"x3"x3 1/2" 10. Device ID No. HS4XDTXXX

CERTIFICATION: The subject device is **unchanged** from the previous approval, and conforms with the latest revision of AAR Specifications for Tank Cars, Appendix A. The device conforms with drawing listed above.

11. By: _____ Title: _____

If device is **changed** since latest approval, fill in the following blanks

12. Reference Previous Drawing	New Drawing	If on Service Trial
No. <u>HS43DT11001</u> Rev. <u>A</u> Date <u>11/7/12</u>	No. <u>HS4XDTXXX</u> Rev. <u>A</u> Date <u>10/01/2019</u>	S.T. No. _____
No. _____ Rev. _____ Date _____	No. _____ Rev. _____ Date _____	S.T. No. _____
No. _____ Rev. _____ Date _____	No. _____ Rev. _____ Date _____	S.T. No. _____

13. New drawing supersedes previous one or does not obsolete it

CHANGES

REASONS FOR CHANGES

- | | |
|--|--|
| 14. a. <u>New Drawing Number</u>
b. _____
c. _____
d. _____
(if needed use supplemental sheet) | a. <u>Reorganized old drawing into a new chart</u>
b. <u>drawing.</u>
c. _____
d. _____ |
|--|--|

15. Normal operational effect of changes of device: None - This is a clerical update the the drawing structure.

16. Drawing submitted with this application: HS4XDTXXX

CERTIFICATION: The above data is correct and conforms with AAR Specifications for Tank Cars, Appendix A. The device conforms with drawing listed above.

17. By: _____ Title: _____

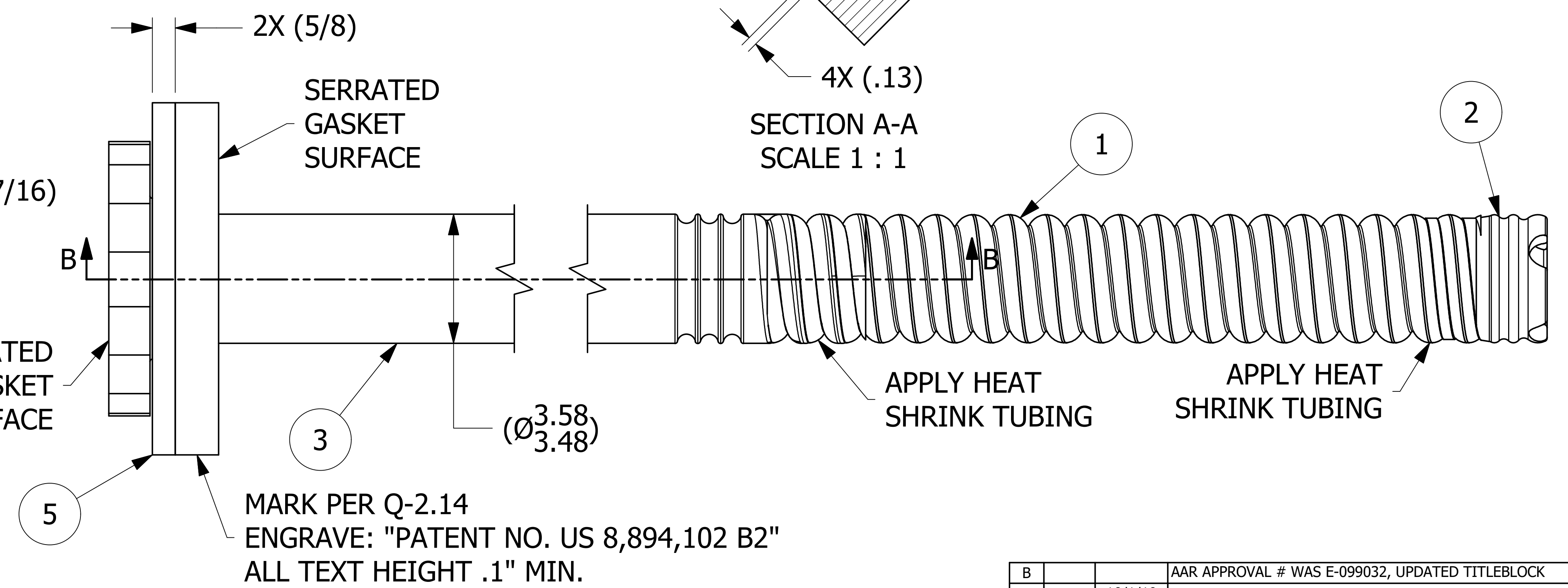
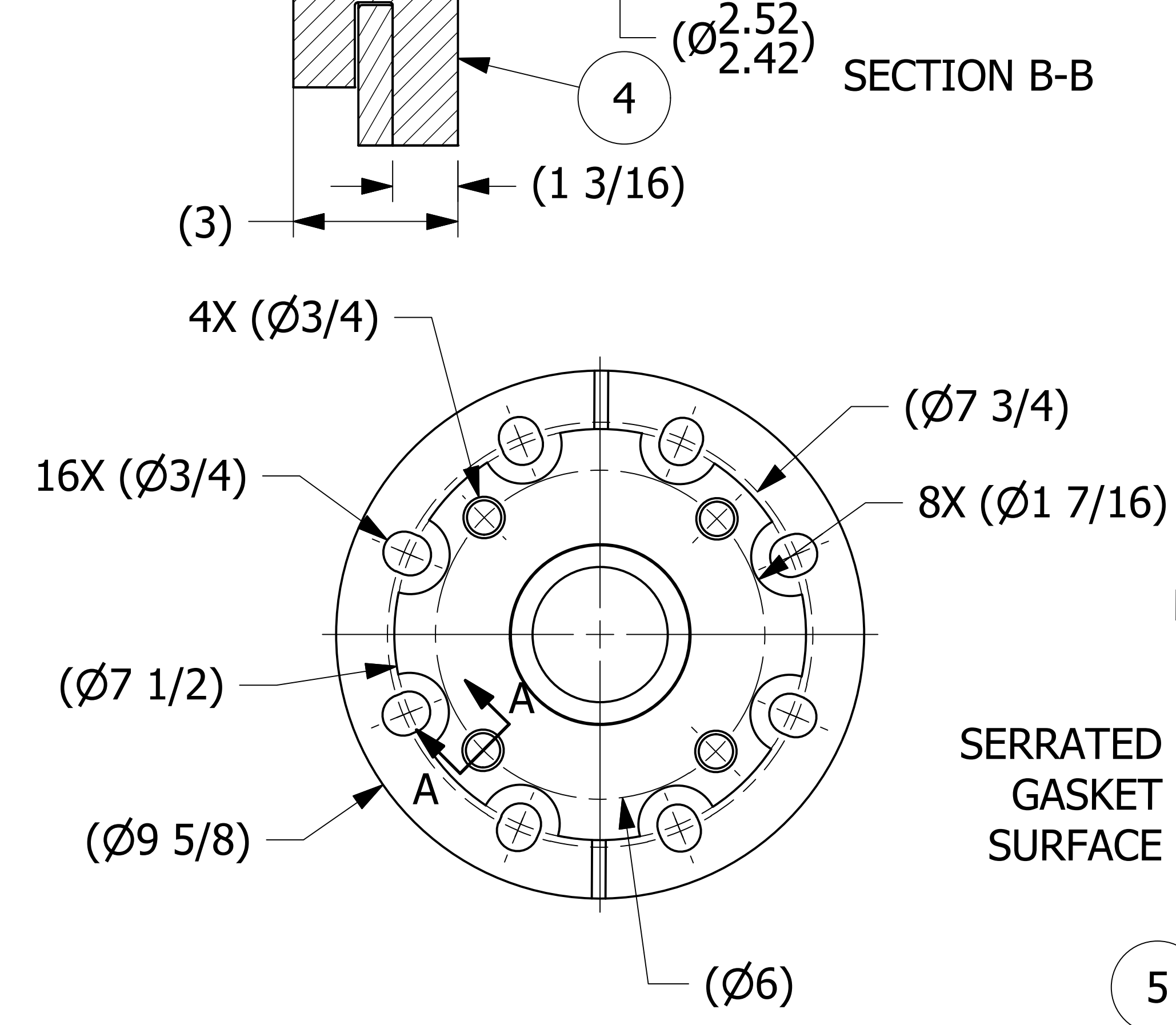
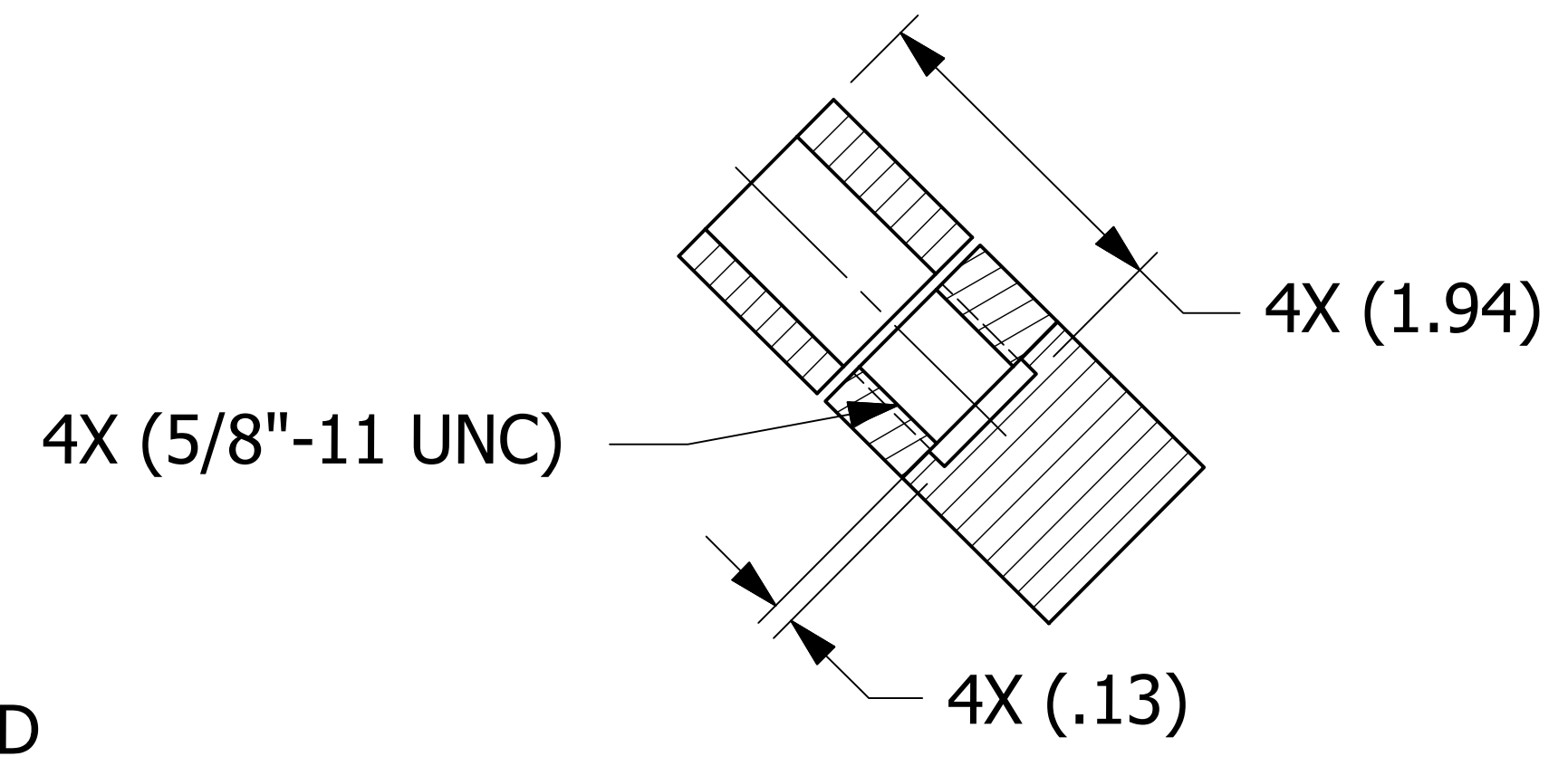
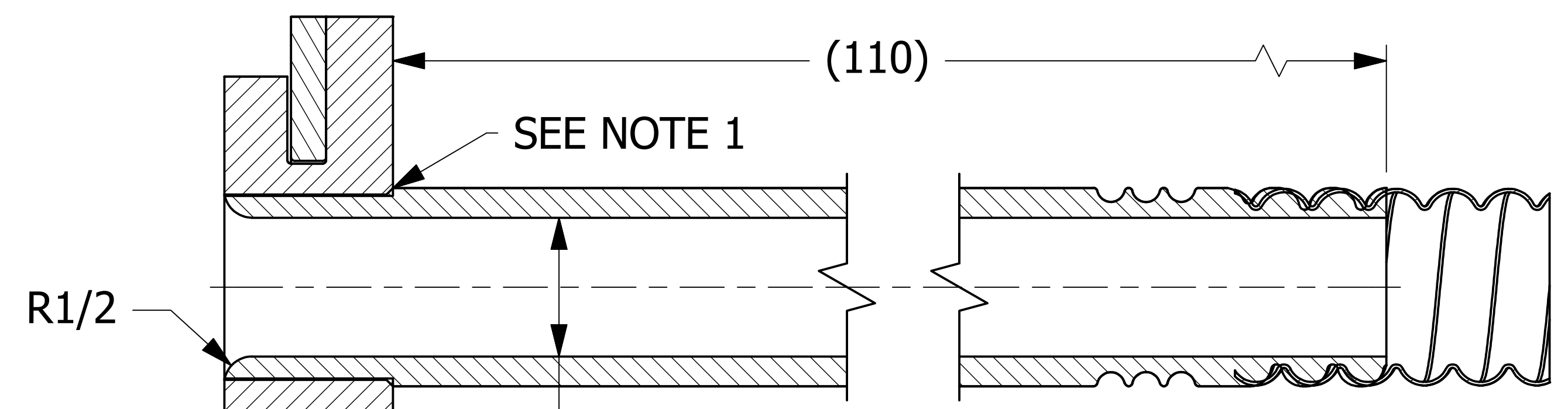
APPROVAL AAR Tank Car Committee:

Date Approved: 8/14/2020



(Signature) on behalf of Committee

NO.	PART NAME	PART#	REQ'D	MATERIAL
1	CONVOLUTED FLEX TUBING 3"	HS3CFT3	1	PTFE
2	FLEX TUBE STRAINER	HS3FTSR2	1	SALCO PE
3	TUBE 2 1/2" X 3 1/2" X 113"	HS3TB113	1	SALCO PE
4	EDUCTION TUBE FLANGE 4" X 3"	HS43DTFL	1	SALCO PE
5	EDUCTION TUBE SUPPORT PLATE	HS43DTSPS4	2	ASTM A240 UNS S30400
6	HEAT SHRINK TUBING KIT (NOT SHOWN)	HS3HSTKA	1	FEP
7	CABLE TIE 3/16"X8" (NOT SHOWN)	LAL20T	4	NYLON

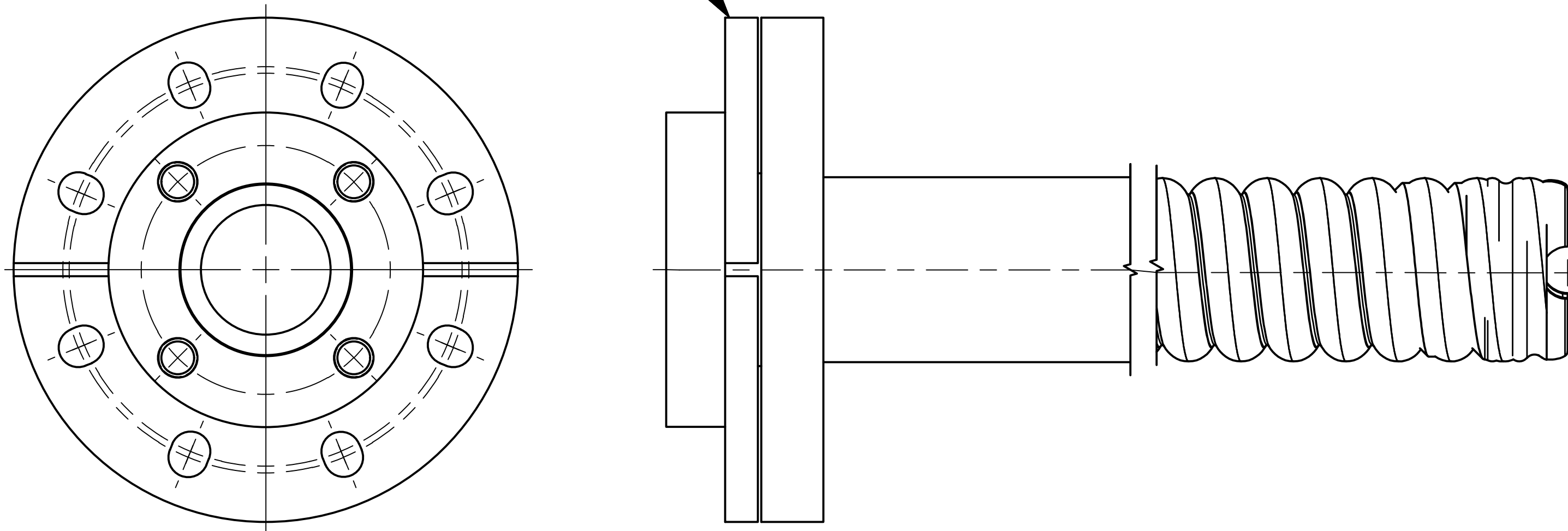


- NOTES:**
1. SEE DOCUMENT DSS 3 FOR FRICTION WELDING SPECIFICATIONS.
 2. SEE DOCUMENT Q-2.14 FOR MARKING PROCEDURES.
 3. FOR NON-FLAMMABLE SERVICE ONLY.
 4. FOR FINISH TUBE LENGTHS OF 121" TO 127 1/2".
 5. AAR APPROVAL NUMBER IS E-202144.
 6. USE CABLE TIES TO SECURE SUPPORT PLATES TO FLANGE.

UNLESS OTHERWISE SPECIFIED DIMENSIONAL TOLERANCES	DRAWN BY:	CHL
FRACTIONAL: ±1/16	CHECKED BY:	WRB
X.XX: ±.03	PROTOTYPE DATE:	8/27/2019
X.XXX: ±.015	APPROVED FOR PRODUCTION BY:	WRB
ANGULAR: ±1°	PRODUCTION DATE:	10/1/2019
DEBURR ALL SHARP EDGES. ALL MACHINED SURFACES TO HAVE A 125 RMS FINISH. UNLESS NOTED OTHERWISE.	SIZE:	D
THIRD ANGLE PROJECTION	DRAWING #:	49415

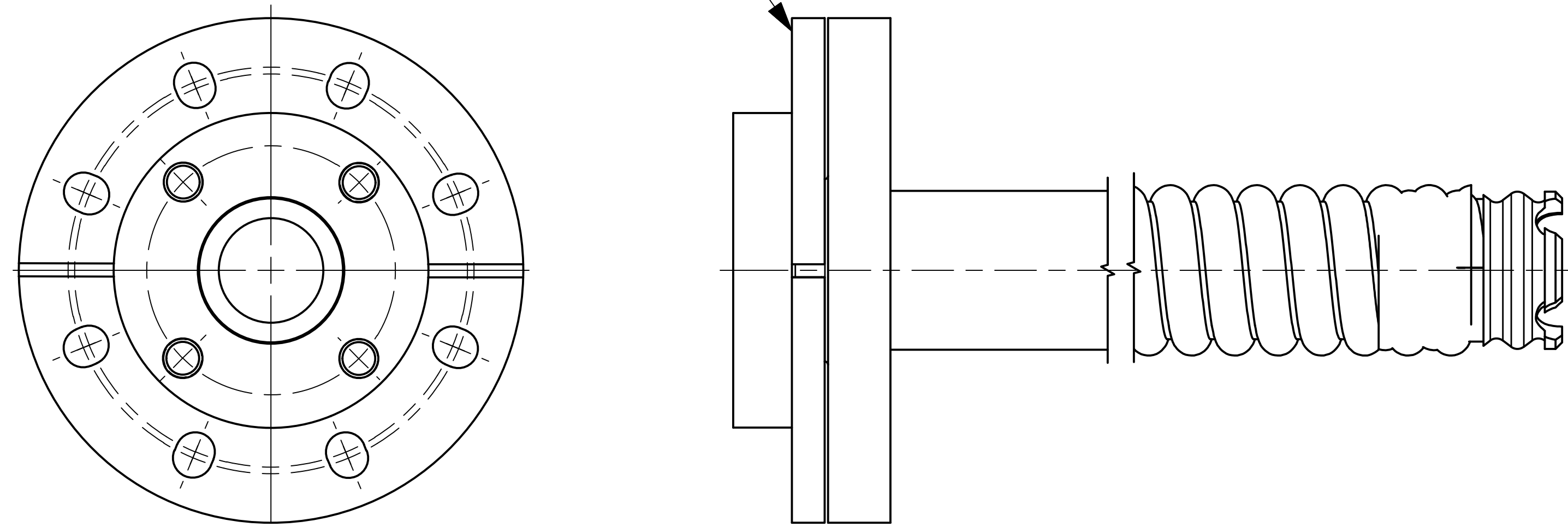
B		AAR APPROVAL # WAS E-099032, UPDATED TITLEBLOCK
A	CHL	10/1/19
REV	BY	DATE
		DESCRIPTION
SALCO PRODUCTS, INC.		
PART NAME: EDUCTION TUBE 4"X3"X3 1/2"		
MATERIAL: SEE BOM		
PROJECT #:	090701	SHEET #: 1 OF 3 SCALE: 1 : 2
PART #: HS4XDTXXX		

304 SS SEGMENTED WASHERS



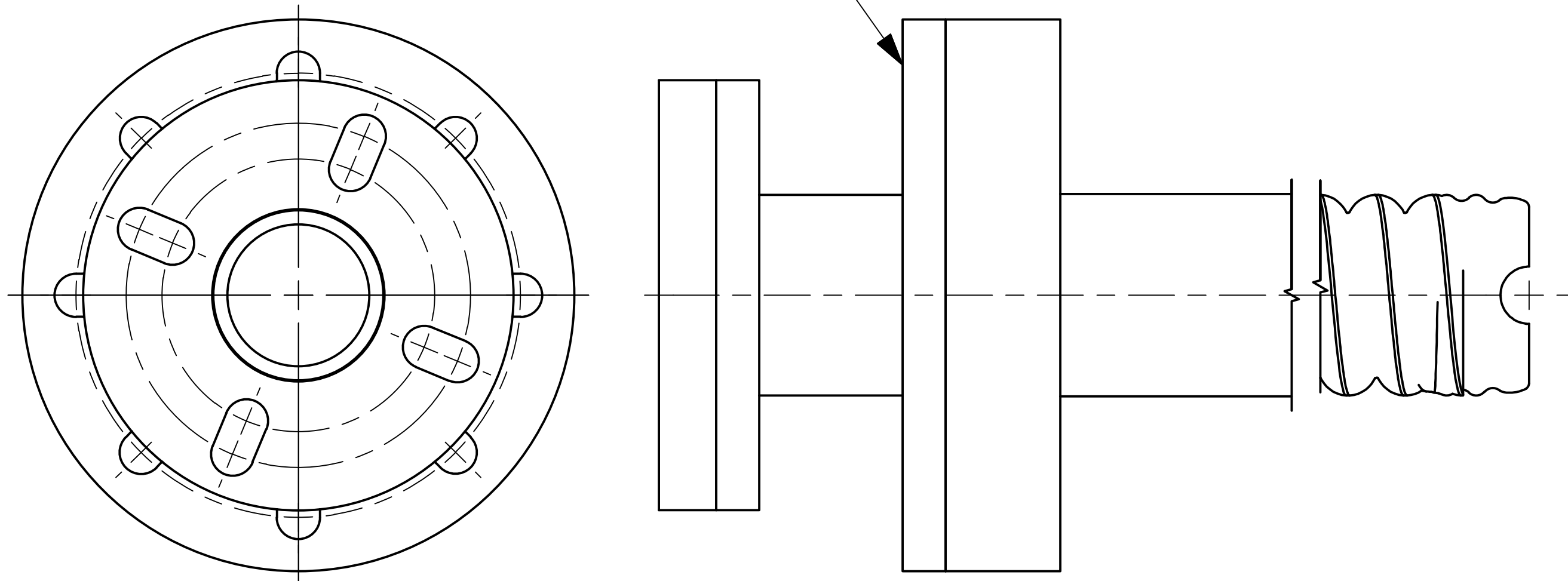
4" X 2" ANSI BOLTING PATTERN
REDUCING FLANGE DIP TUBE

304 SS SEGMENTED WASHERS



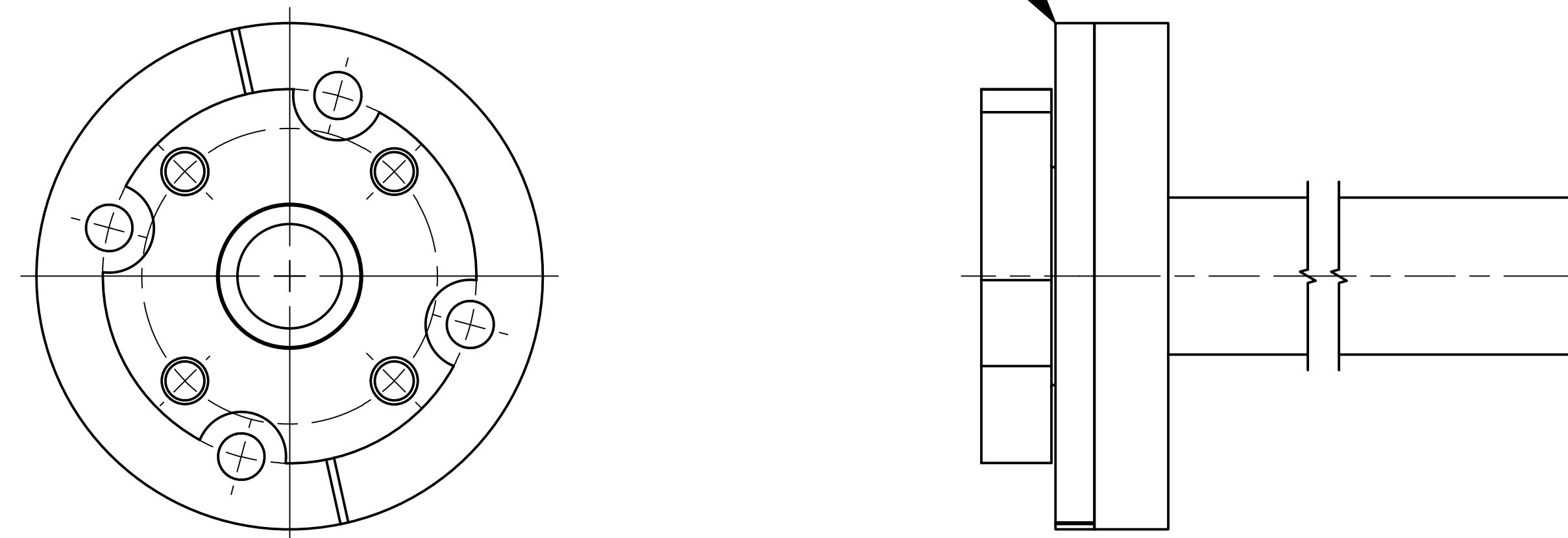
4" X 2" ANSI BOLTING PATTERN
REDUCING FLANGE 3" X 2" DIP TUBE

316 SS SPOOL

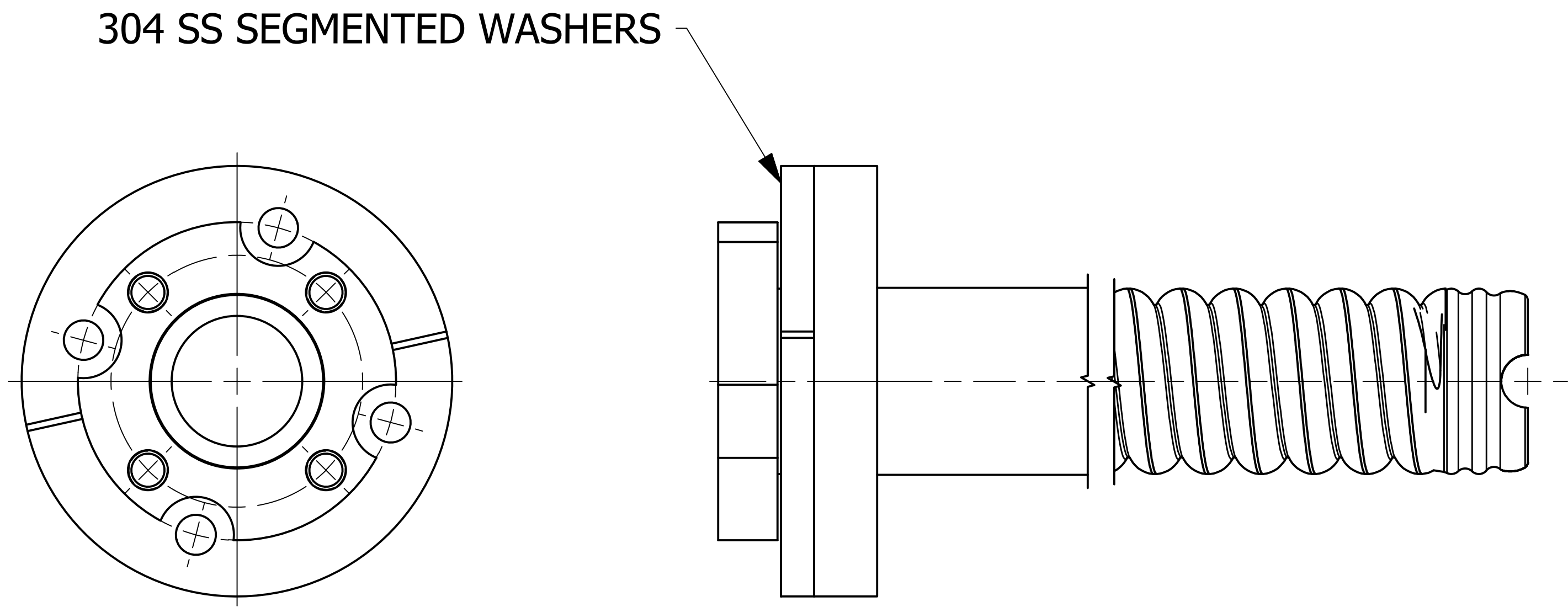


4" X 2" ANSI BOLTING PATTERN
MOUNTING FLANGE SPOOL DIP TUBE

304 SS SEGMENTED WASHERS



3" X 2" ANSI BOLTING PATTERN
REDUCING FLANGE DIP TUBE



304 SS SEGMENTED WASHERS

3" X 2" ANSI BOLTING PATTERN
REDUCING FLANGE DIP TUBE